



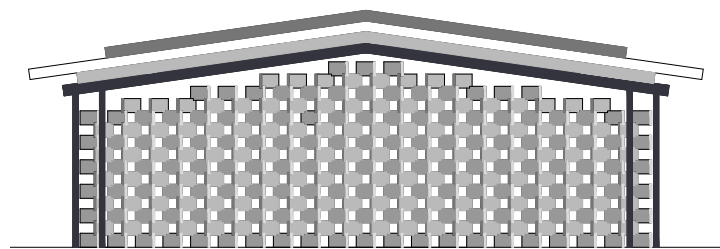
EXTERIOR PERSPECTIVE

NATUZZI DESIGN 2017





INTERIOR PERSPECTIVE



design

+

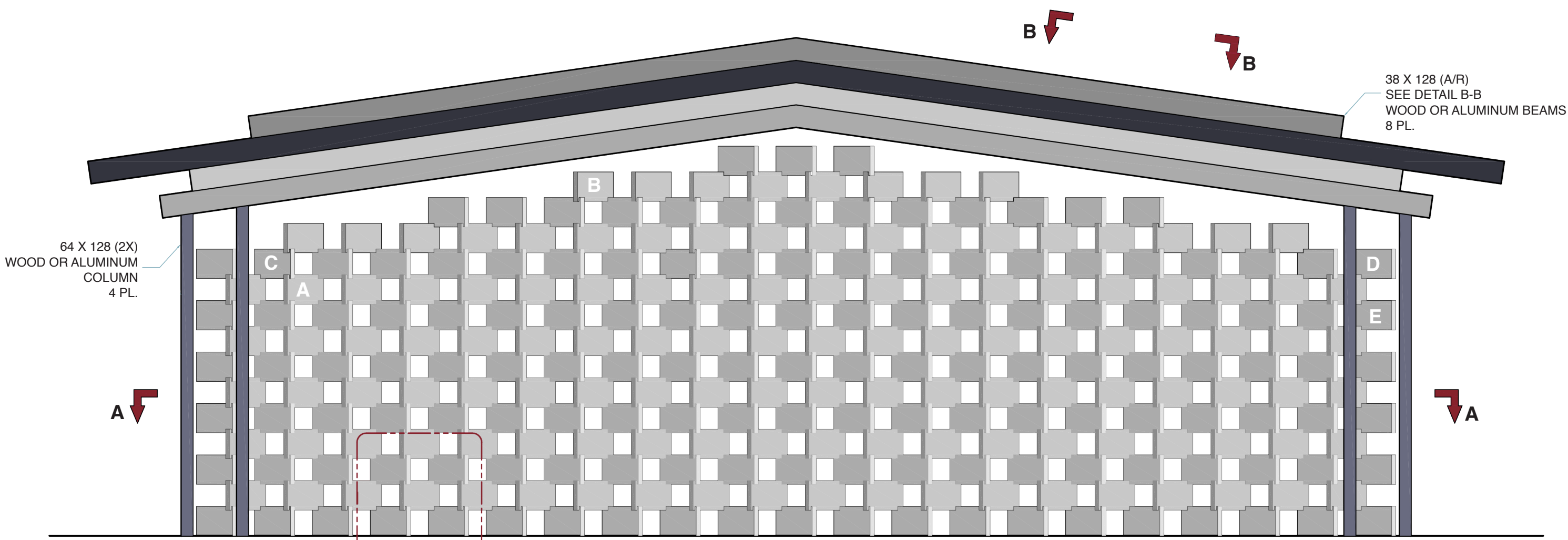


philosophy

=

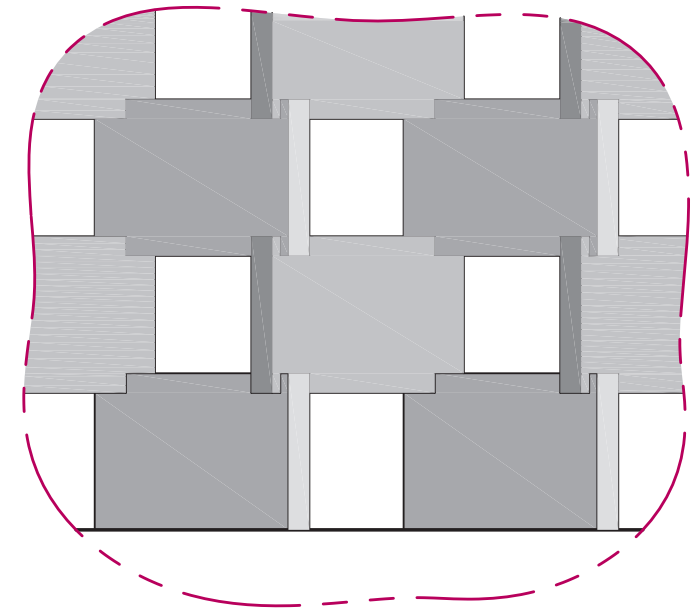
C·U·S·P





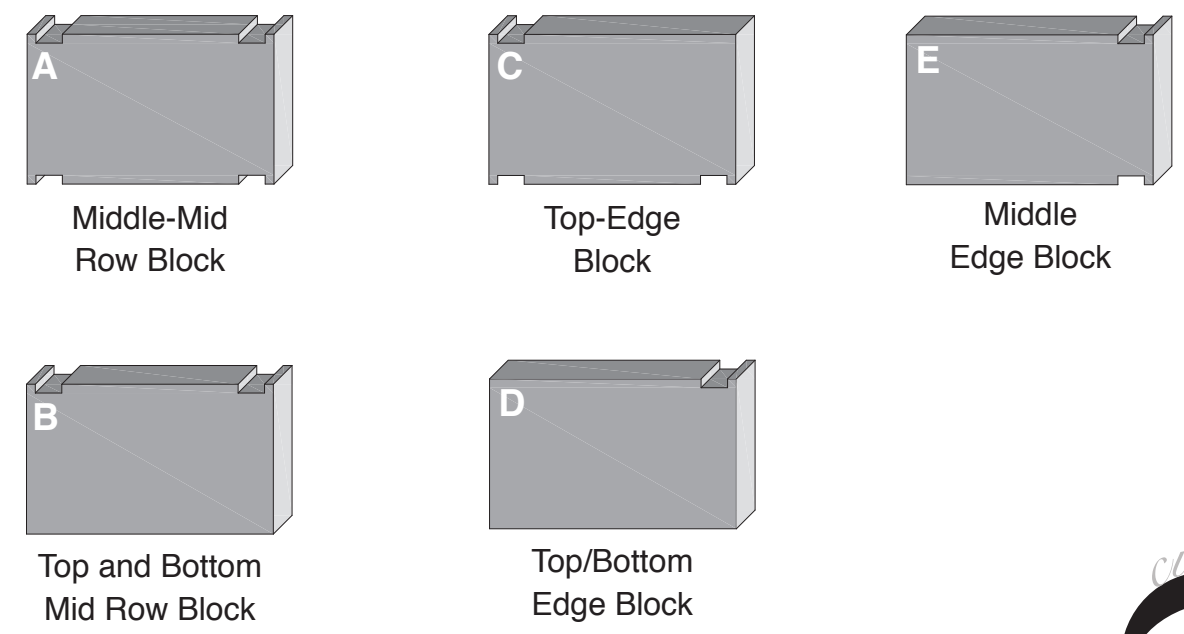
STACKING
WALL SYSTEM
SEE DETAIL C

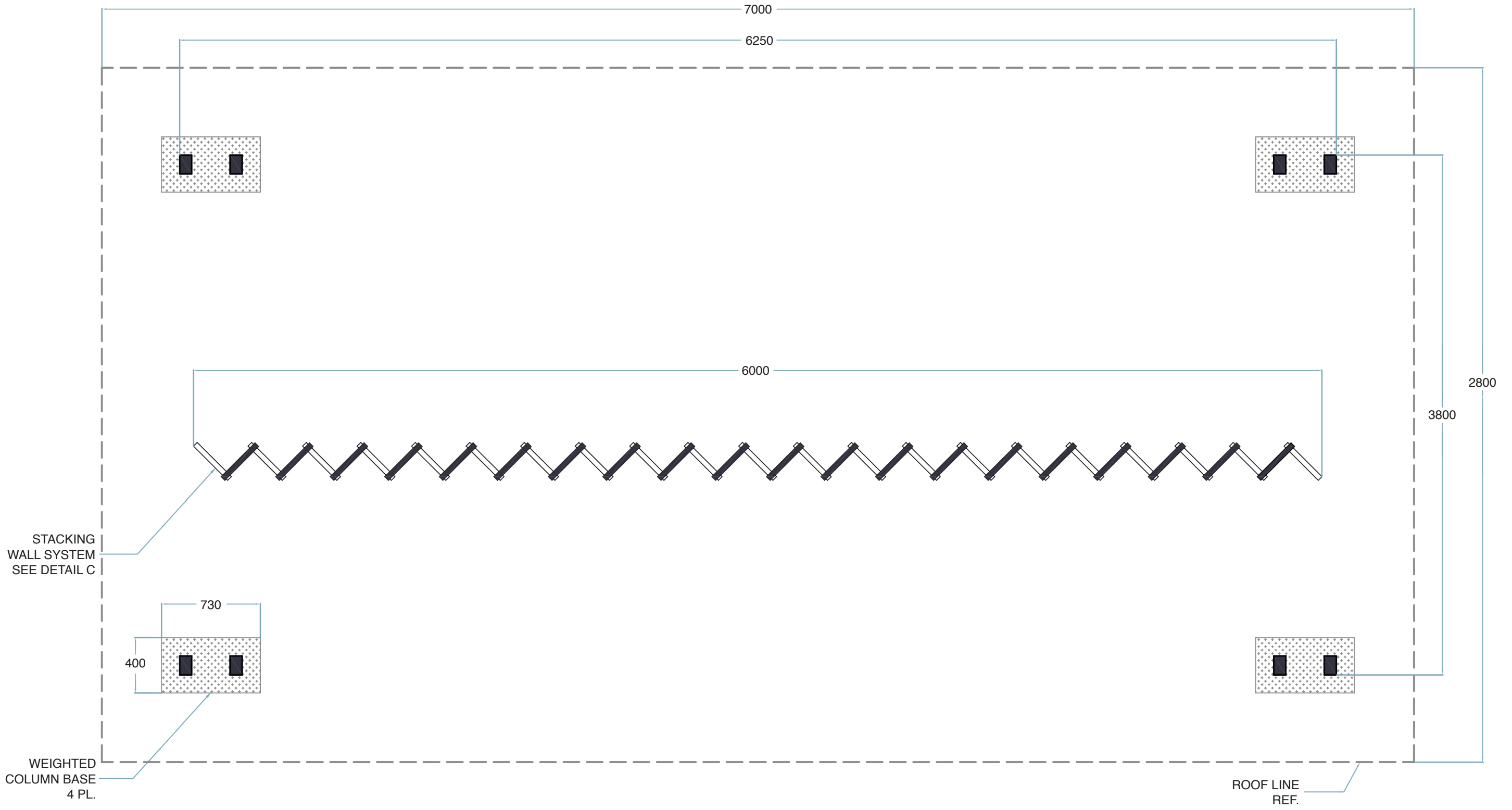
-1 CUSP DESIGN INSTALLATION



DETAIL C
Stacking Wall System

BLOCKS REQUIRED:

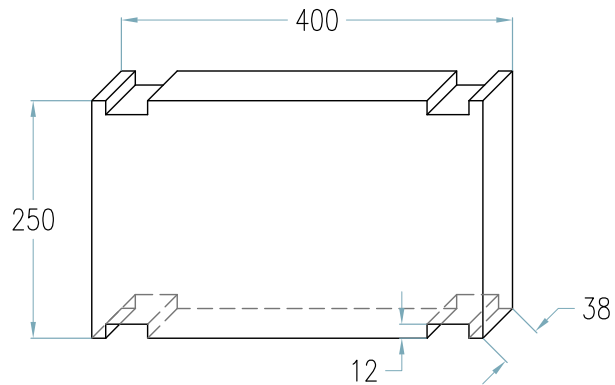




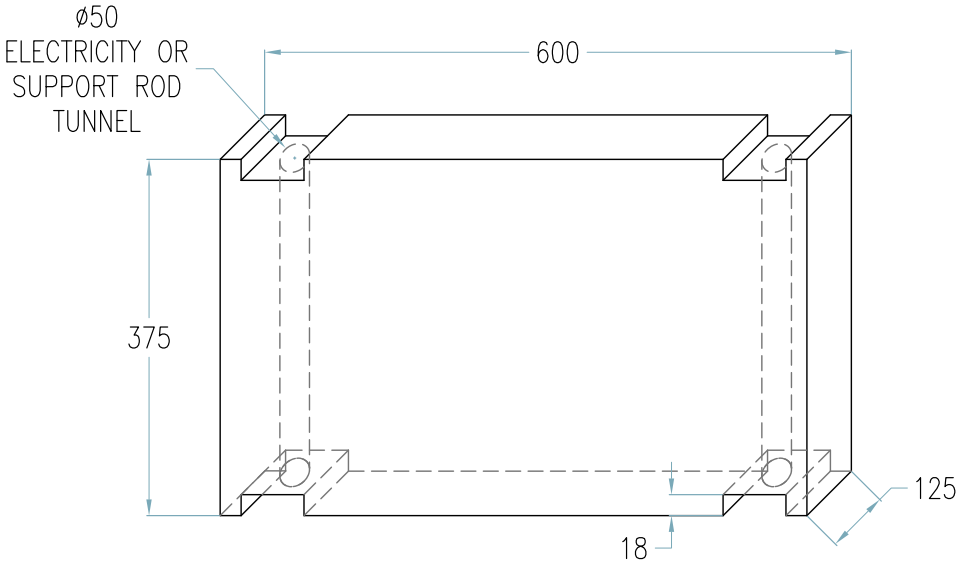
VIEW A-A
Floor Plan



BLOCK SIZE OPTIONS:

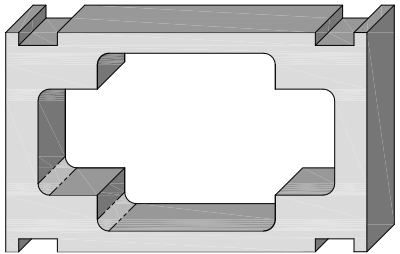
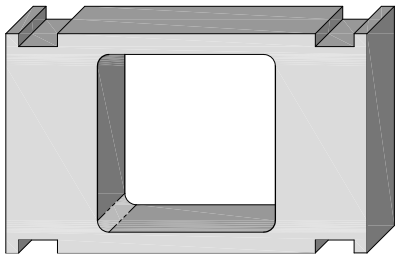
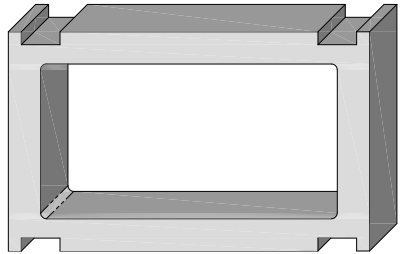


SMALL
BLOCK

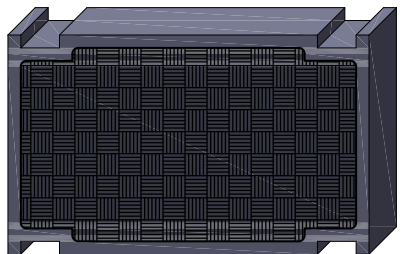


LARGE
BLOCK

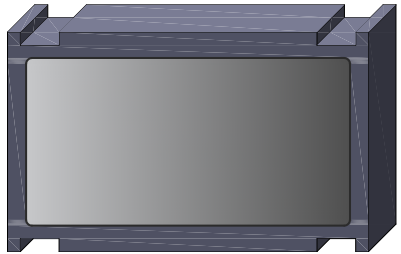
BLOCK FUNCTION OPTIONS:



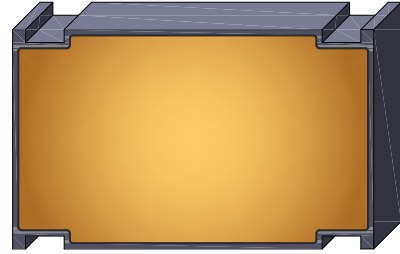
Shelf or Window



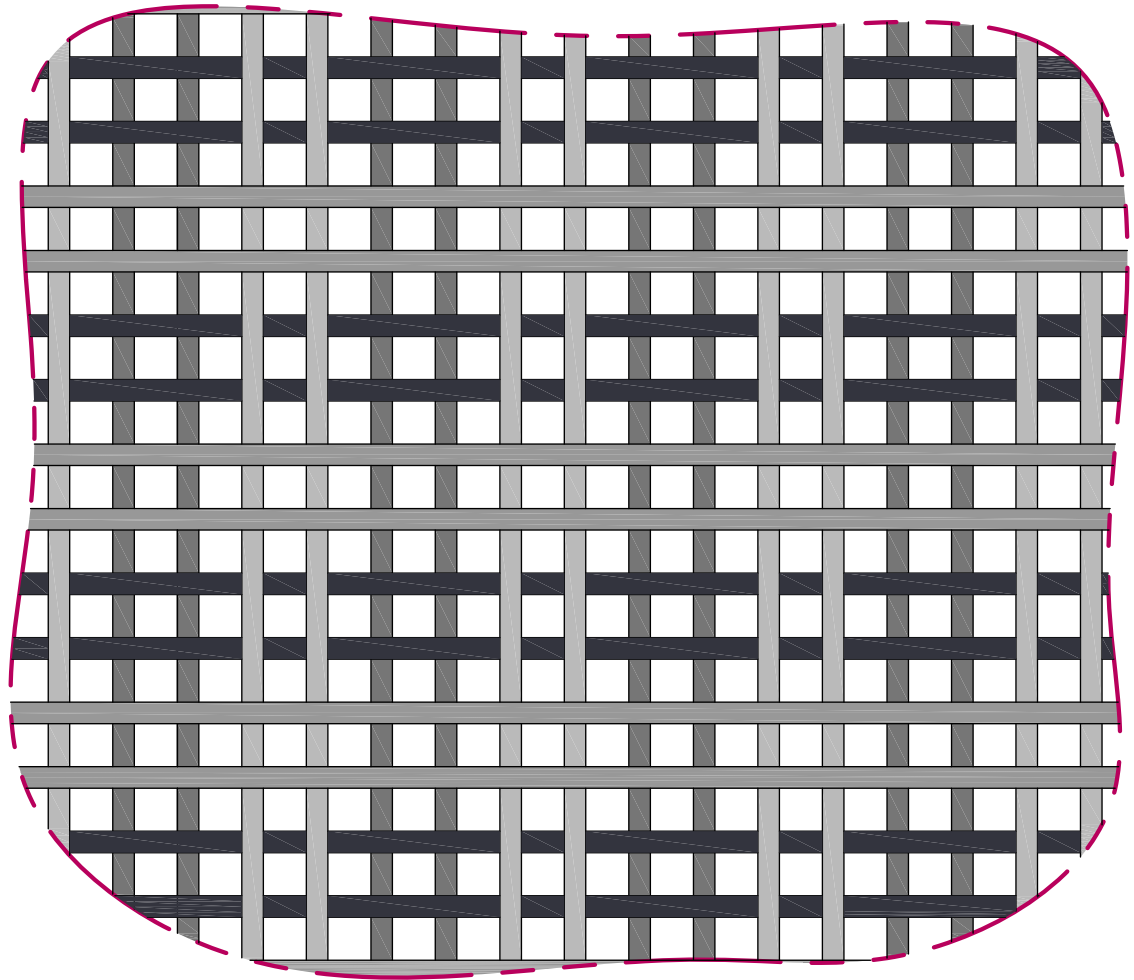
Speaker



Television or
Computer

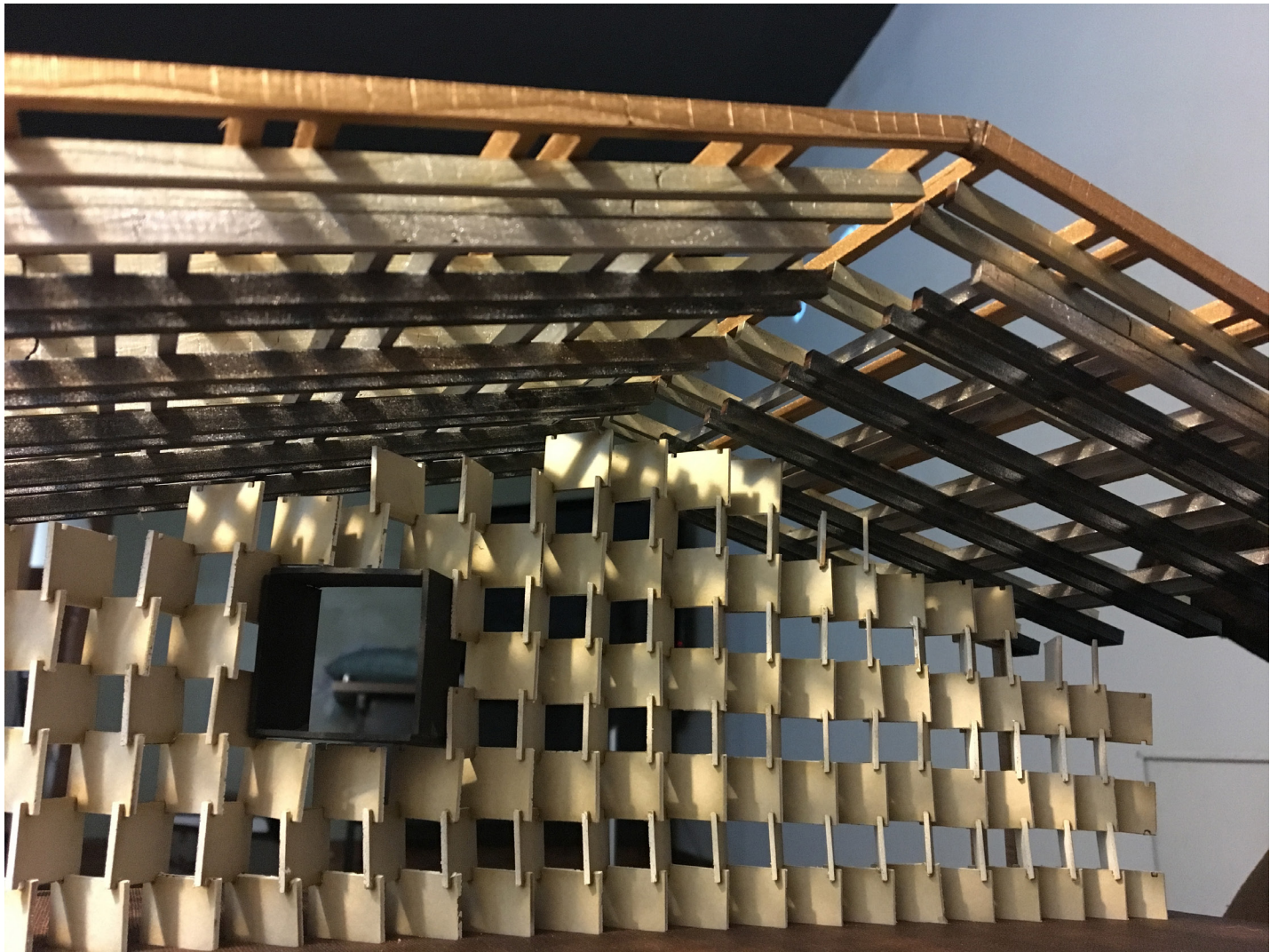
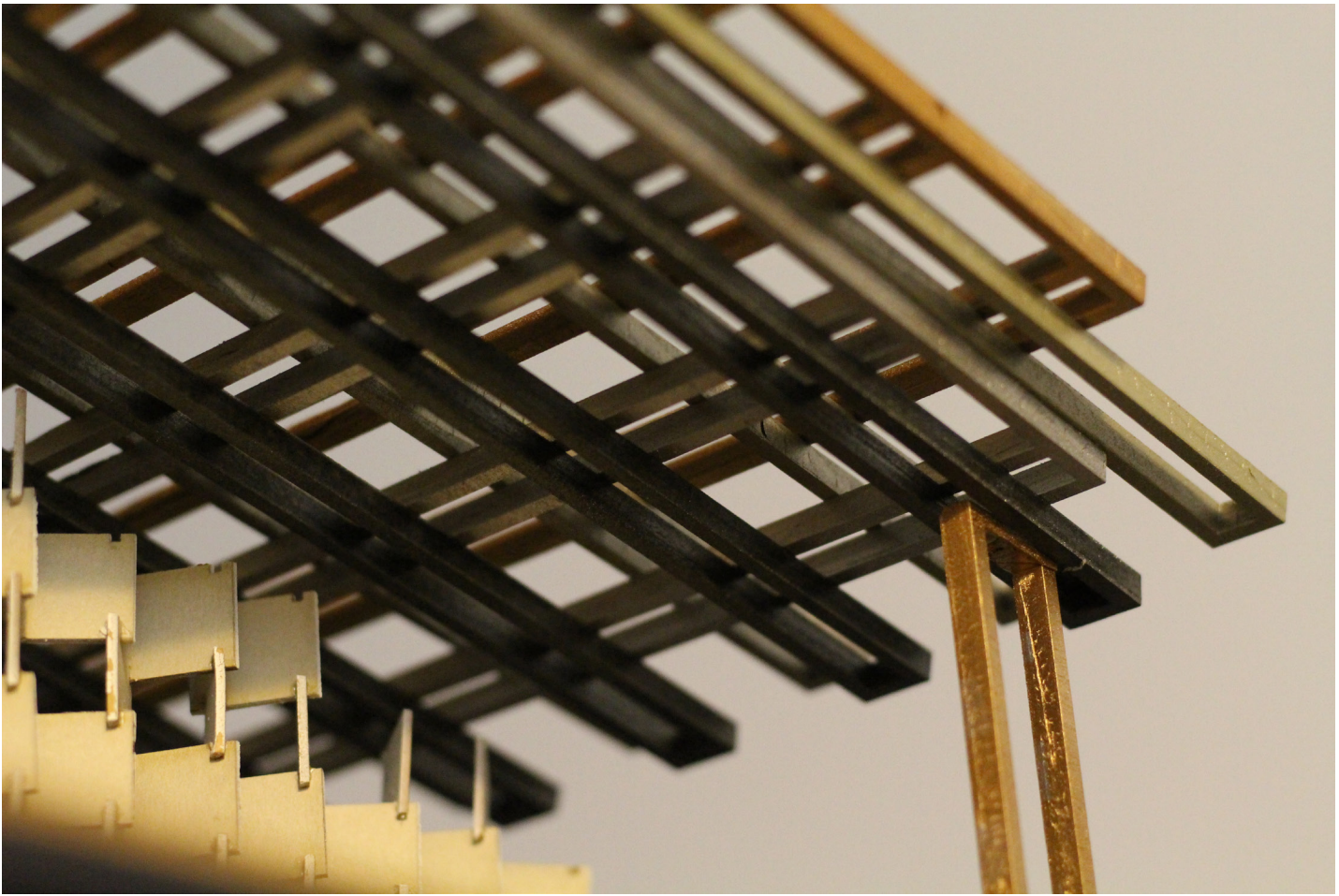
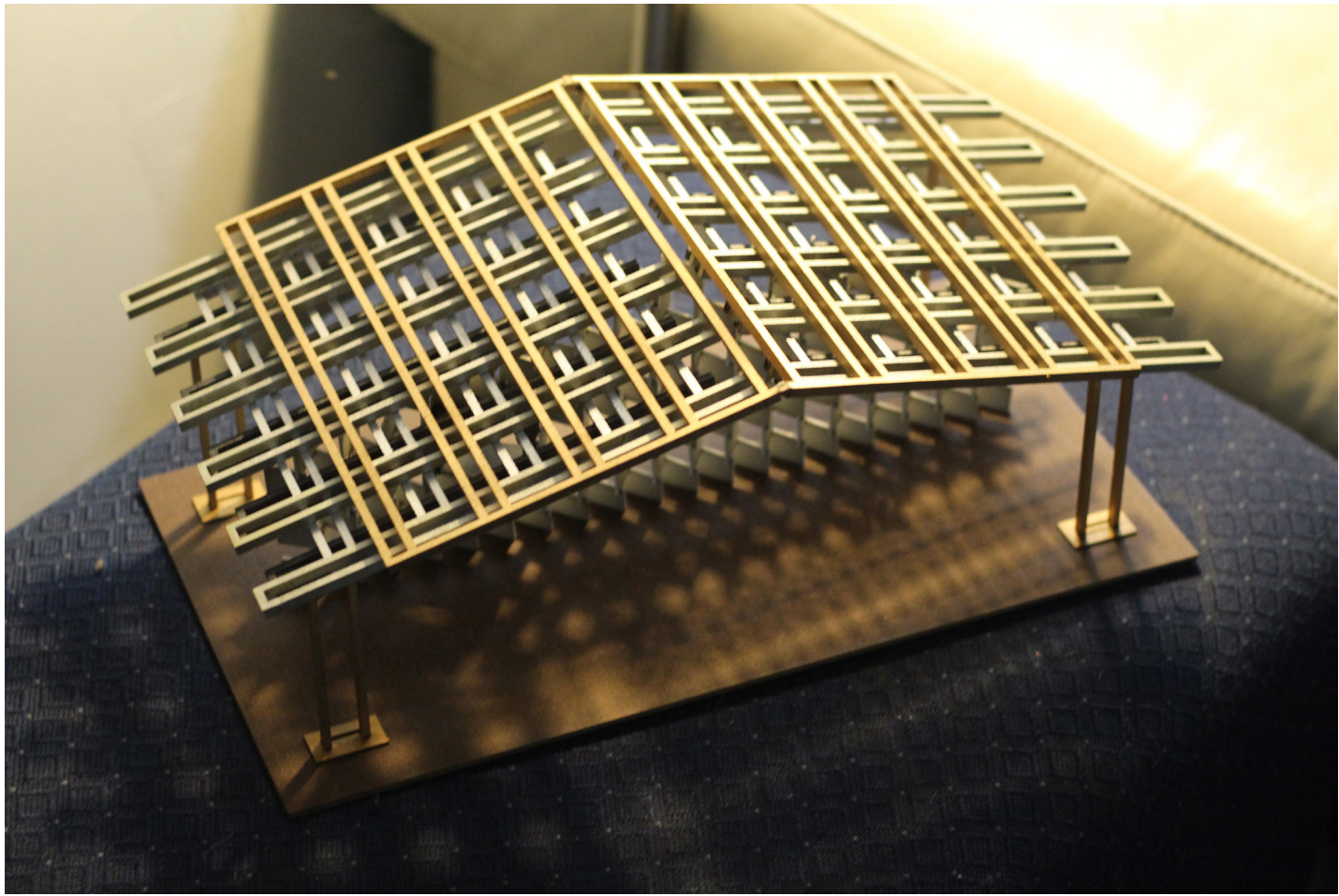


Indirect Light
Source



DETAIL B-B
Roof System



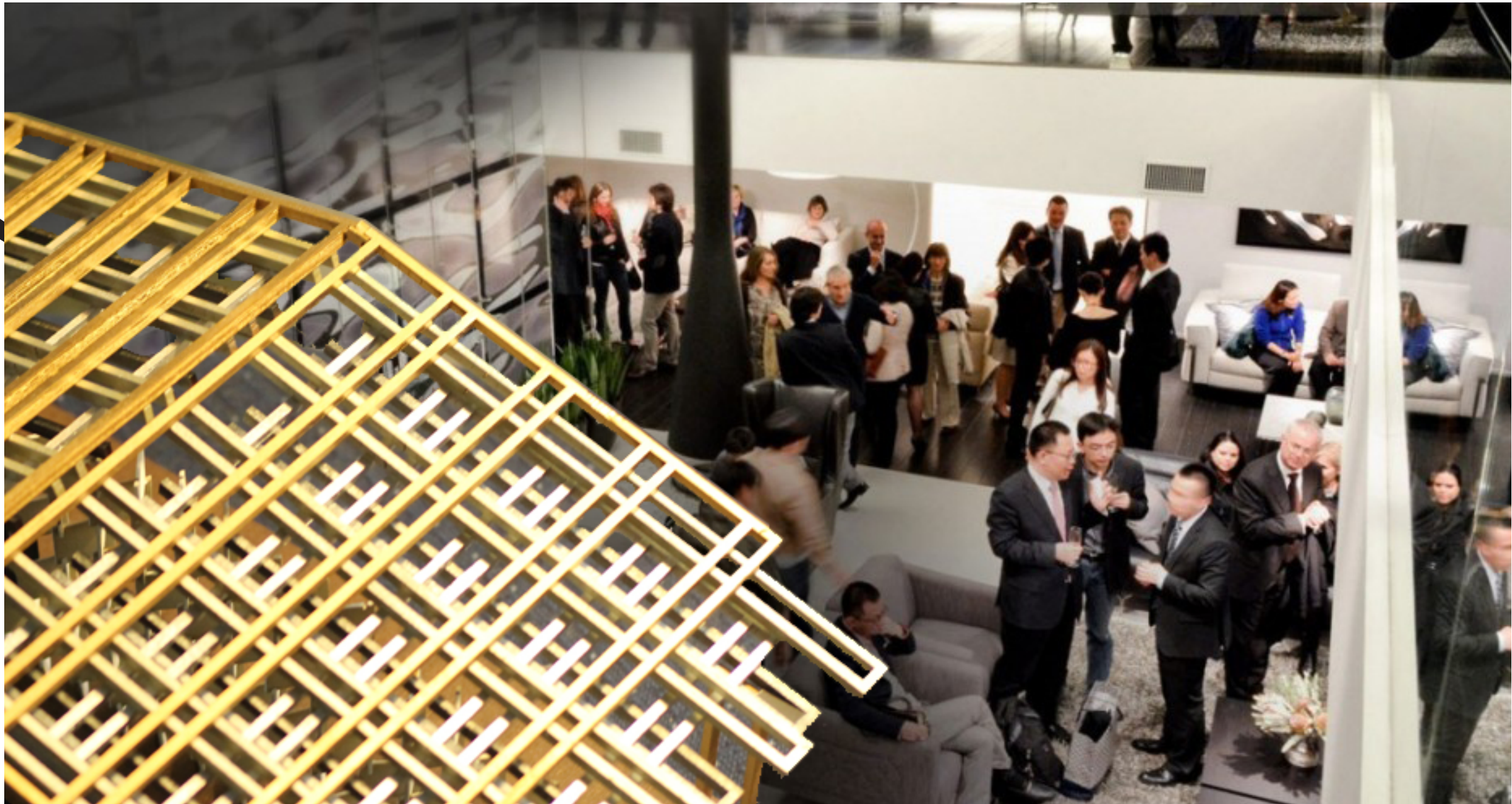


MODEL PHOTOS



A *CUSP*
home

C·U·S·P



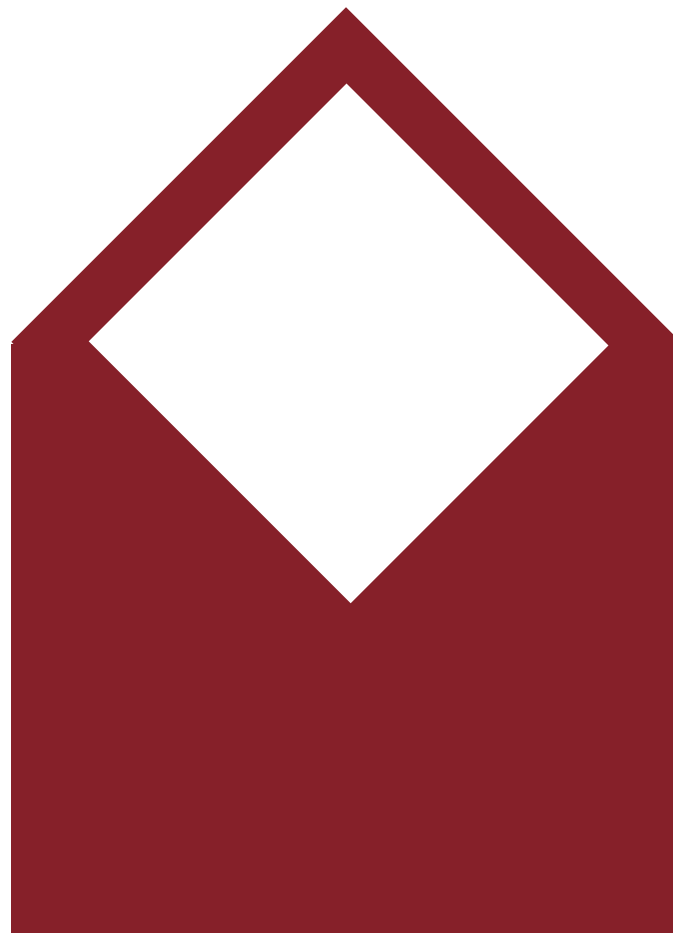
ROOF VIEW PERSPECTIVE

(to) capture - understand
- see beyond - progress



What is a home?

An envelope that engages, embraces,
energizes, and enriches.

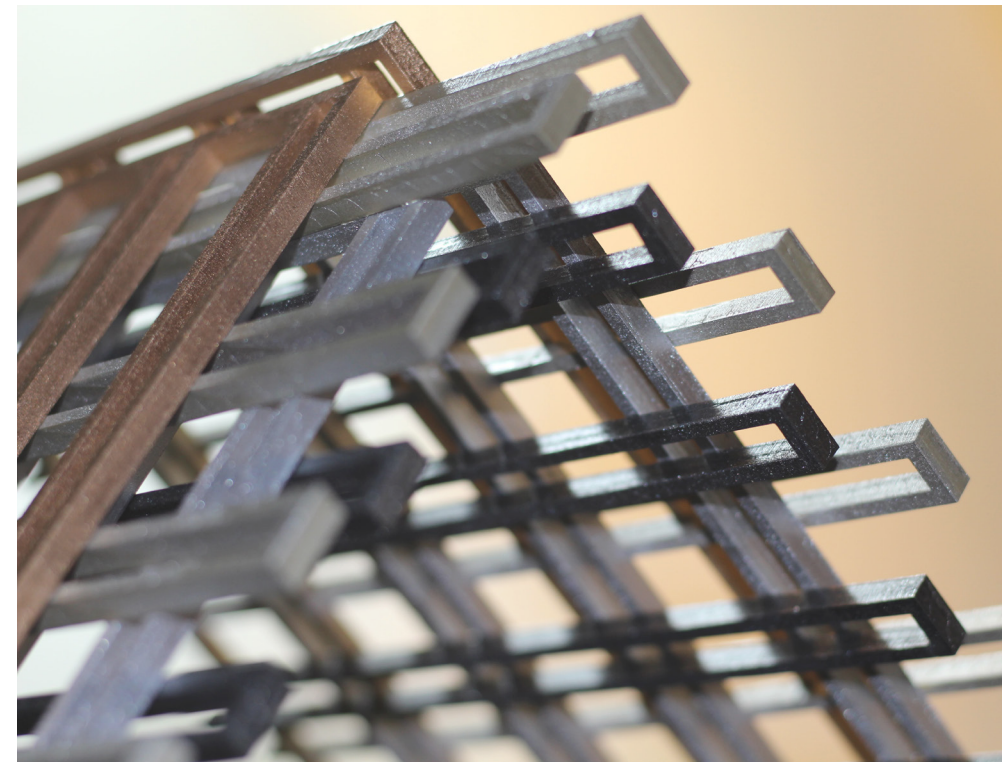
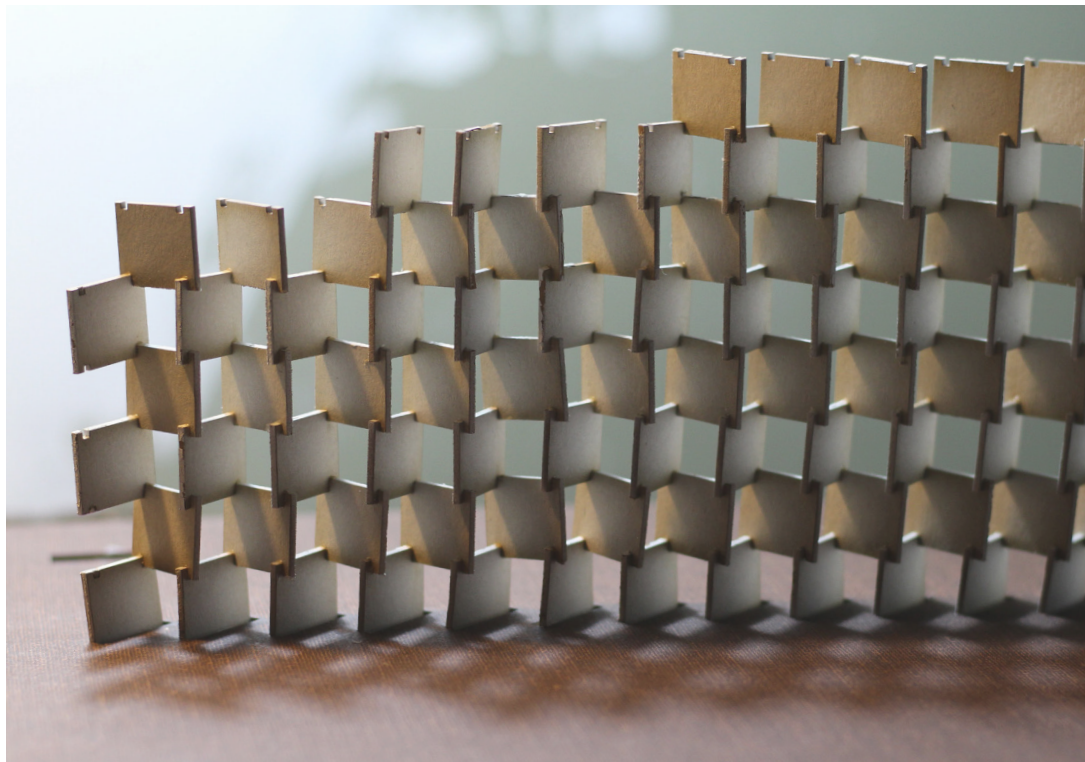


*In which you write
the story of a lifetime -*



What is a high quality living environment?

A support structure that nurtures health, promotes personal growth, and supports productive living.



*A space that allows
the mind to be at ease*



How can you make a city better via better residences?

By providing more spaces that enable and encourage personal growth.

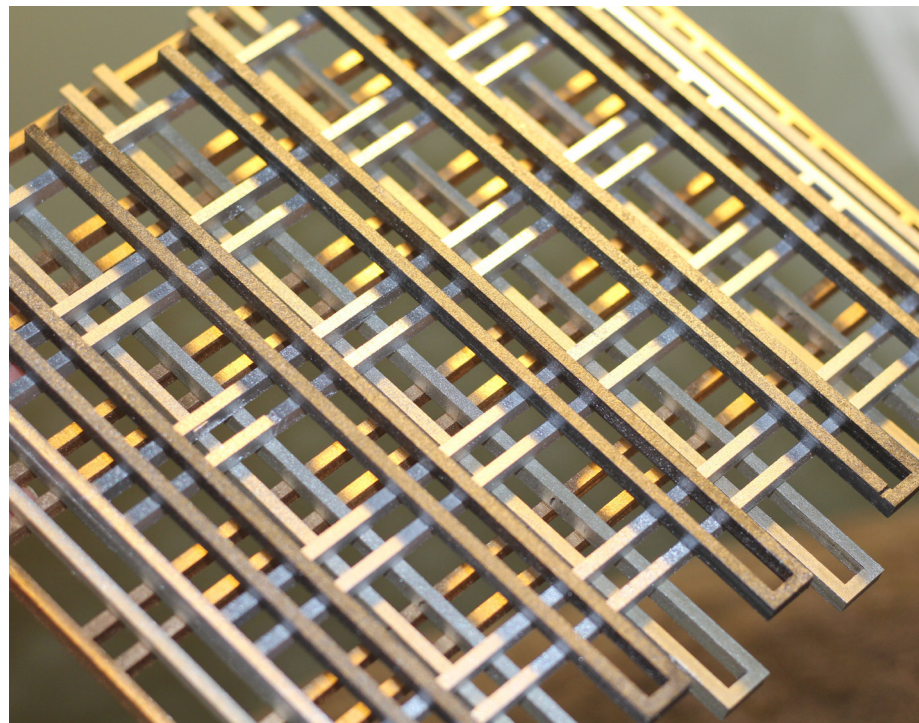


Better People = Better City



What is harmony?

Elements woven together in such a way that they disappear and only the whole is perceived.



Visual silence

