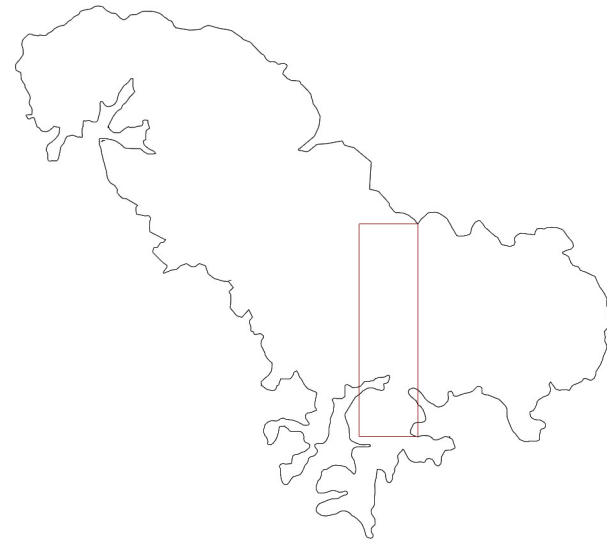
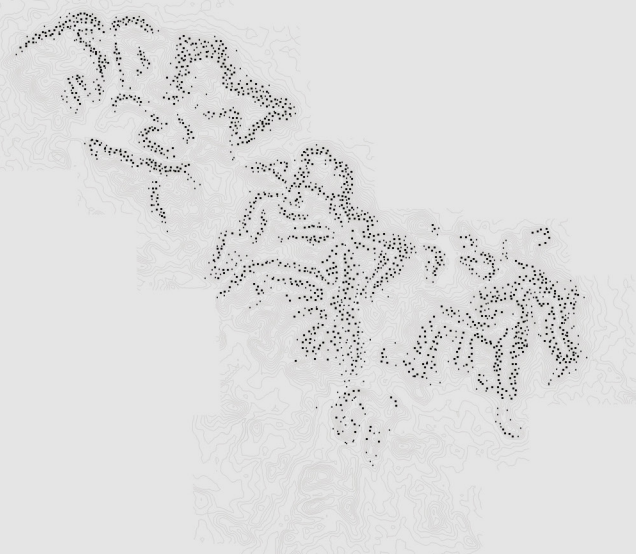
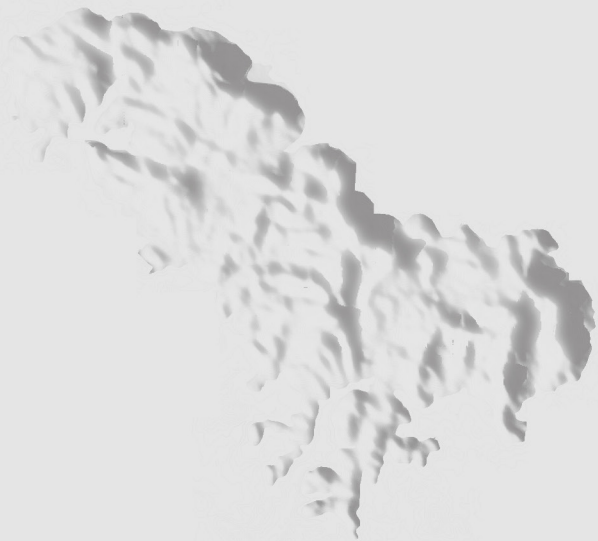
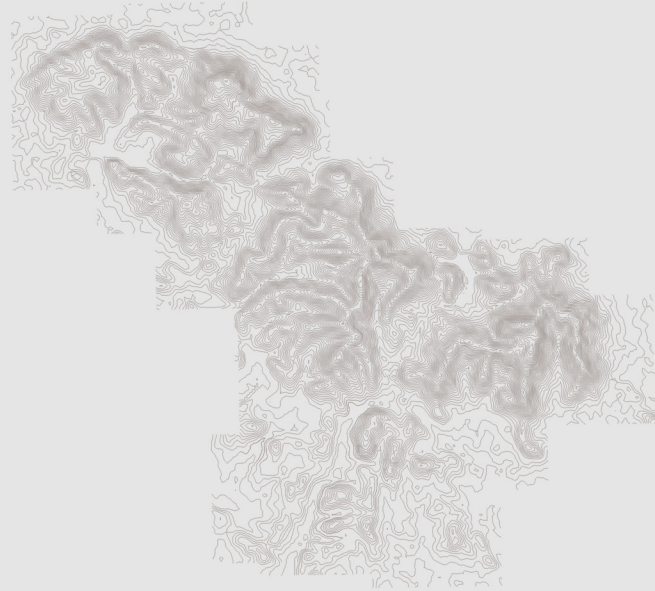


I NORTH



Full of merit,
yet poetically,
man dwells on this earth.

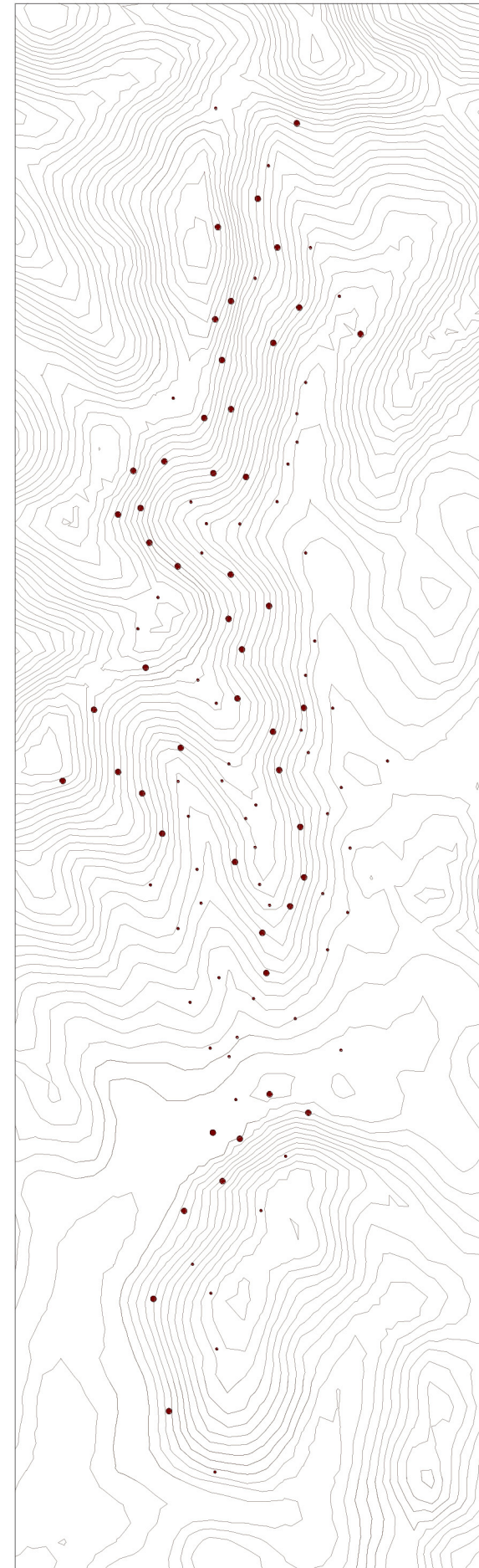
-Friedrich Holderlin

yíng (簞)

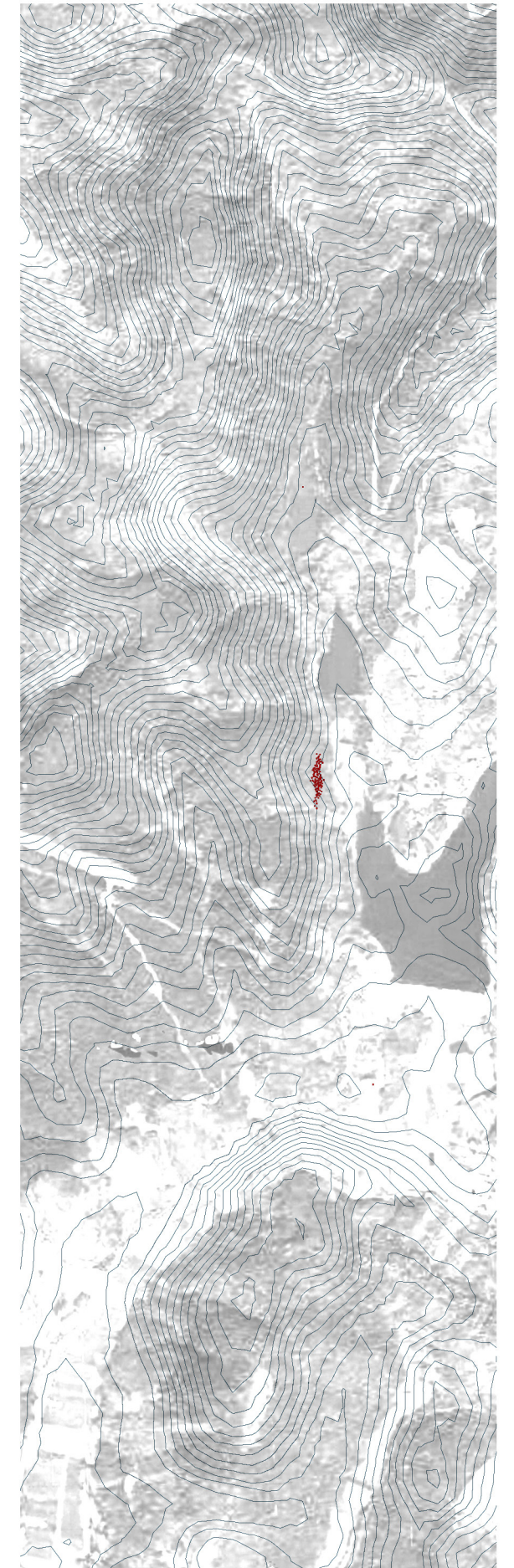
yíng is the bamboo
basket labourers use for
collecting tea.

My design started with
the circular shape which
is similar to yíng. It is a
collection of raised steel
disks. They are hiding in
the tea bushes. It gives
people image of
working labourers.

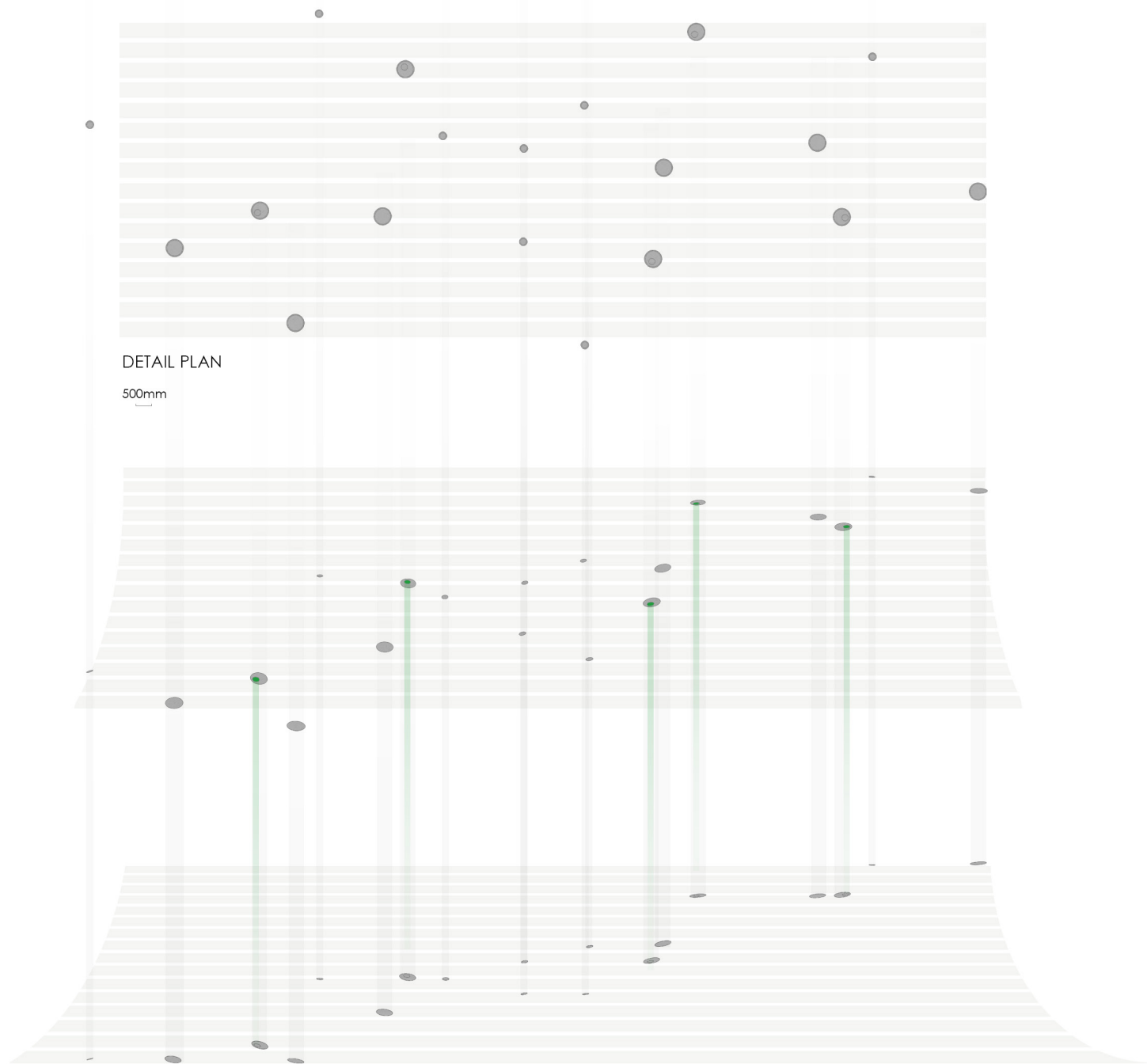
The unique landform
helps to define the flow
of units. 110 spots are
picked from mountain
along line Yonghe.



12.5m or 7.5m diameter circles were drawn
from each spots.



The landform within the circles was scaled down to 1:25 reduced scale installation. The topography decided the orientation and level of each individual unit..



DETAIL PLAN

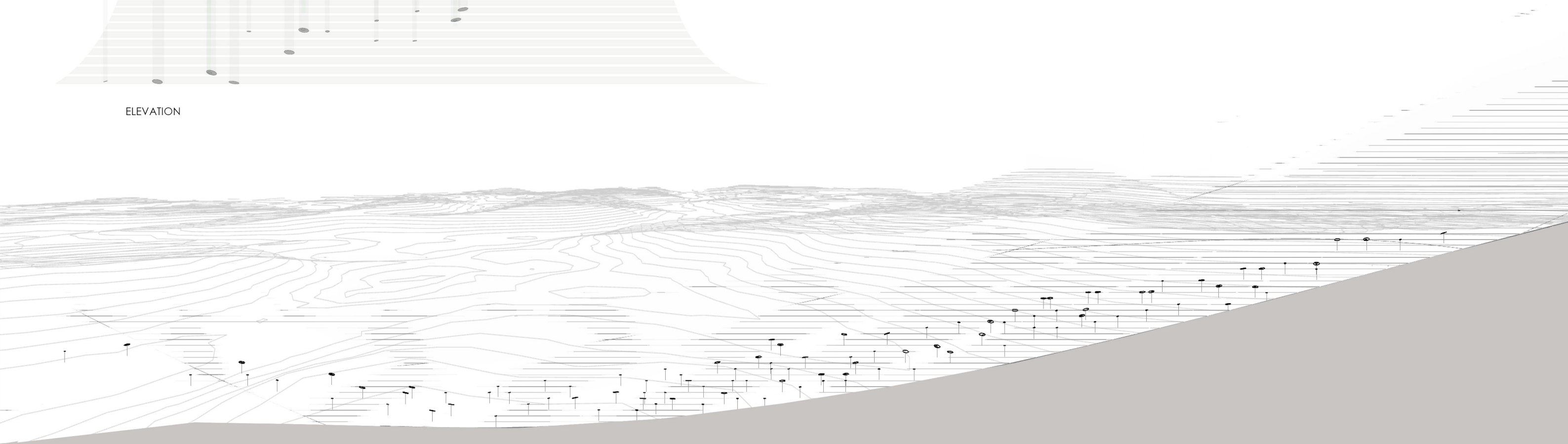
500mm

ELEVATION

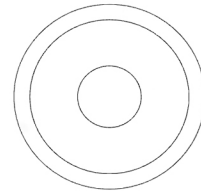
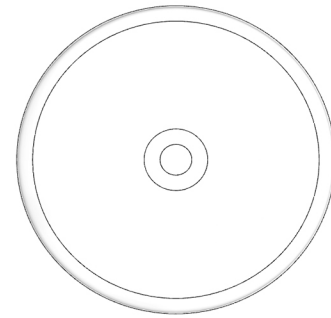
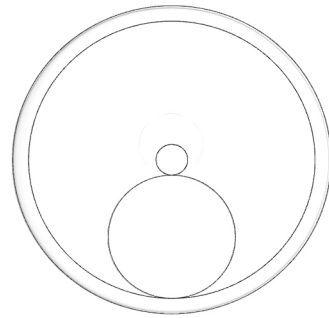
This is an implicit dialogue between traditional culture and modern life, mountain and people.

Tea bushes form unique 'stave'. yín g look like dancing notes. They are dancing and jumping among green leaves. Visitors can immerse themselves in this "melody".

20 of disks in big size (Dia50cm*H100cm) have 20cm diameter holes. These disks have tea leaves come out from holes just as bamboo baskets with tea leaves half filled.



PLAN
1:10



ELEVATION
1:10

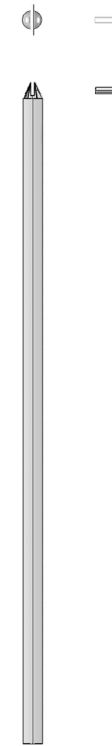
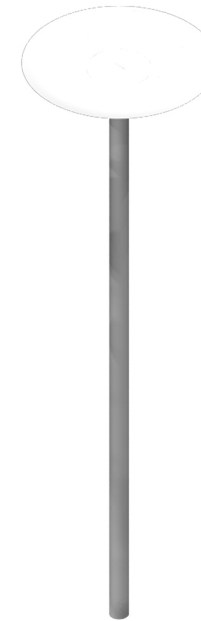


SIZE

dia: 50cm 20cm(hollow)
h: 2cm
no. 20

dia: 50cm h: 2cm
no. 30

dia: 30cm h: 1cm
no. 60



dia: 3cm h: 100cm
no. 110

There are 110 individual units in two different sizes (50 disks in big size, 60 in smaller size). Each component can be mass-produced. It allows each unit to be adjusted to certain angle as designed.

The location and orientation of each unit can be checked on site. The chosen spots can be flexibly adapted to give necessary access for visitors and protection and respect for environment.

PARALLEL





The balance between light (yang) and shadow (yin) develops the most poignant characters of this place, which can be read through the geological history.

It just occurred to me that labourers are very adept at picking and putting leaves in the baskets behind them. They are singing along. The sound reaches the other side of the mountain.



