

無想之門

The gate of WUXIANG moutain

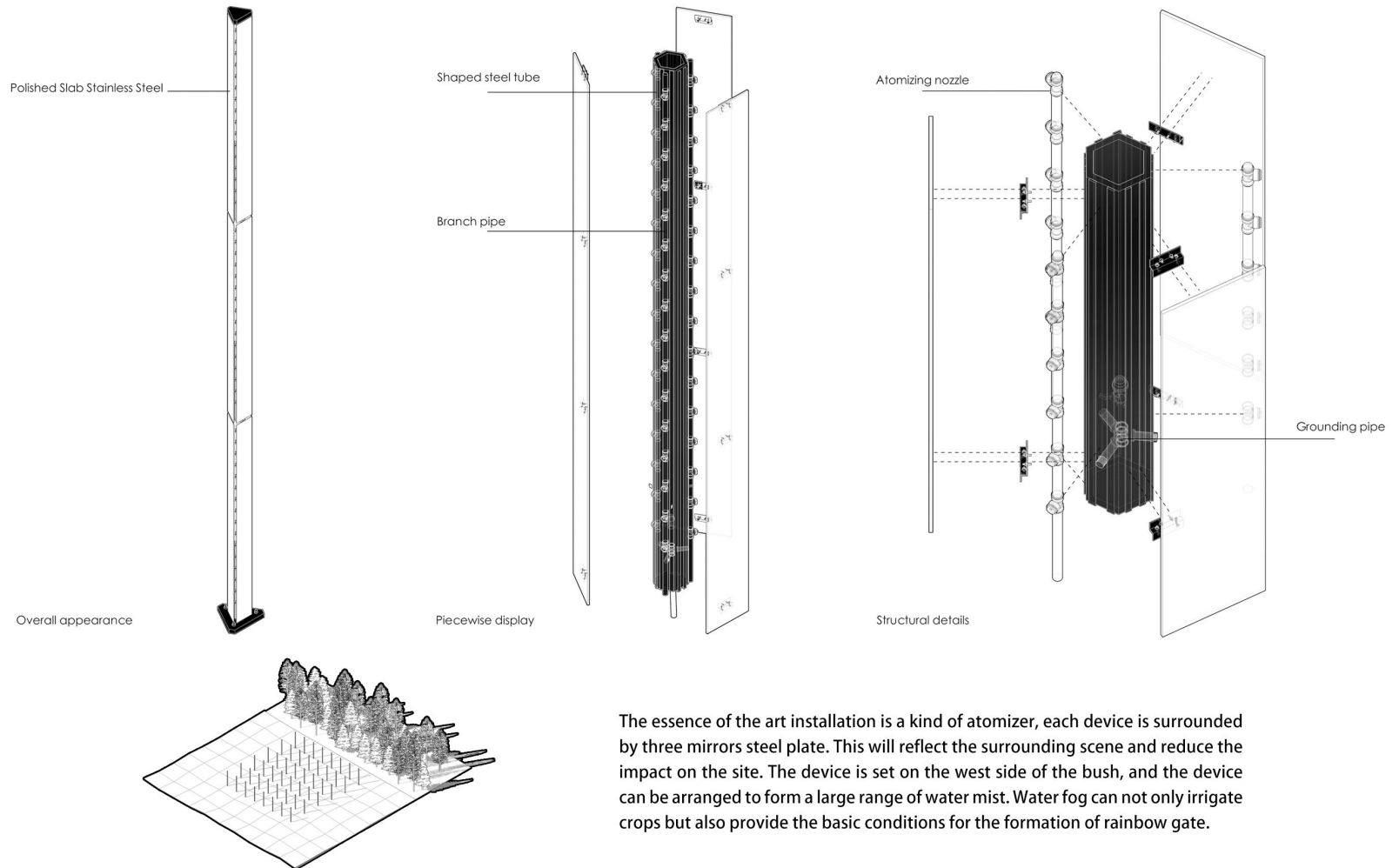


Awaken the beauty of nature and return it to nature

無想之門

The gate of WUXIANG moutain

The model of an art installation



The essence of the art installation is a kind of atomizer, each device is surrounded by three mirrors steel plate. This will reflect the surrounding scene and reduce the impact on the site. The device is set on the west side of the bush, and the device can be arranged to form a large range of water mist. Water fog can not only irrigate crops but also provide the basic conditions for the formation of rainbow gate.

無想之門

No door is in mind



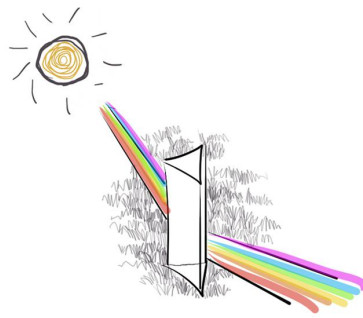
That day, dark clouds cover the sun, the sky is grey, cold will not slow the shadow of a hurry.
Suddenly, rain drops fall, is it autumn?
I saw the golden scene in front of me, Run unbridled inside, that is the autumn!
The emergent memories make people seek and return.
Finally arrived at a rice field, sunlight flash, gold wave float.
In a trance, Water mist diffuses, and door showing;
I couldn't help walking towards him, walking towards him, it seemed like an eternity
It is the gate of the rainbow, the gate of nature, the gate of no thought.

無想之門

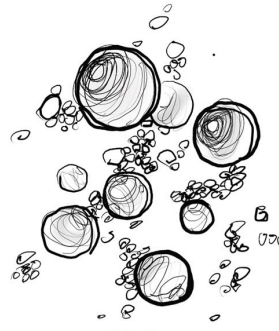
The gate of WUXIANG moutain

THE PRINCIPLE

Rainbow is because the sun shot into the air near spherical droplets, causing the dispersion and reflection of light. Sunlight enters the water droplets at different angles and is reflected in the water droplets at different angles. The most intense reflection at 40 to 42 degrees causes the rainbow we see.



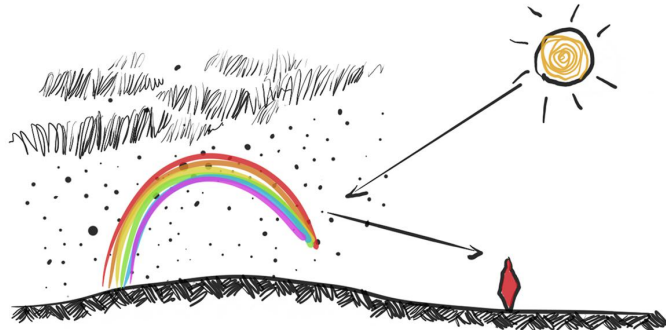
Dispersion of light



Air drop

Natural phenomenon

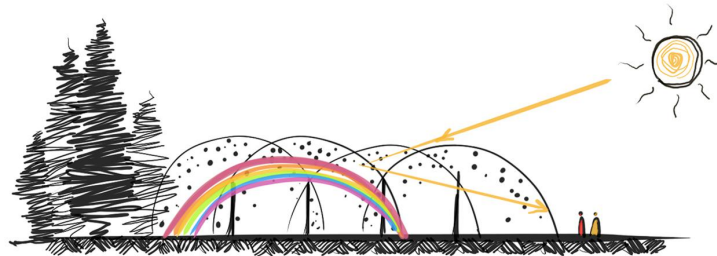
Rainbows occur when the sun strikes the observer's back at a low Angle. Rainbows are most often seen in the afternoon after rain. When the air is less dusty and full of water droplets, and the other side of the sky is dark because there are still rain clouds, the sun can be seen without clouds above or behind the observer, forming a rainbow and being seen.



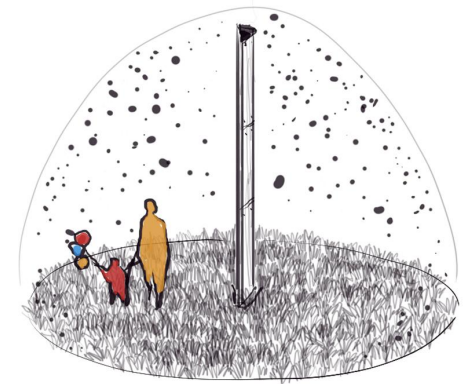
Natural colours of the rainbow

Design foundation

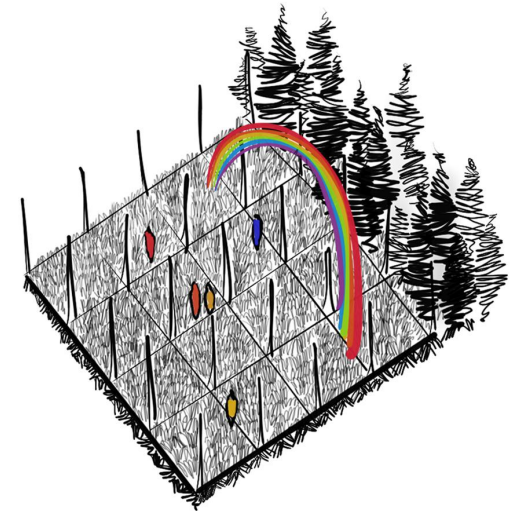
The rainbow is not accidental phenomenon, as long as the water droplets in the air reaches a certain concentration and the sun shone from behind with a low Angle, and the background color darker, can form a rainbow. So you can make a rainbow under artificial conditions.



Artificial rainbow



Spray systems irrigate fields while increasing the density of water droplets in the air, providing conditions for the formation of artificial rainbows.



The device is arranged in a matrix to form a large amount of spray. The water droplets rise with the air, and take the trees as the dark bottom, forming artificial rainbow doors.

無想之門

The gate of WUXIANG moutain



Realistic artificial rainbows