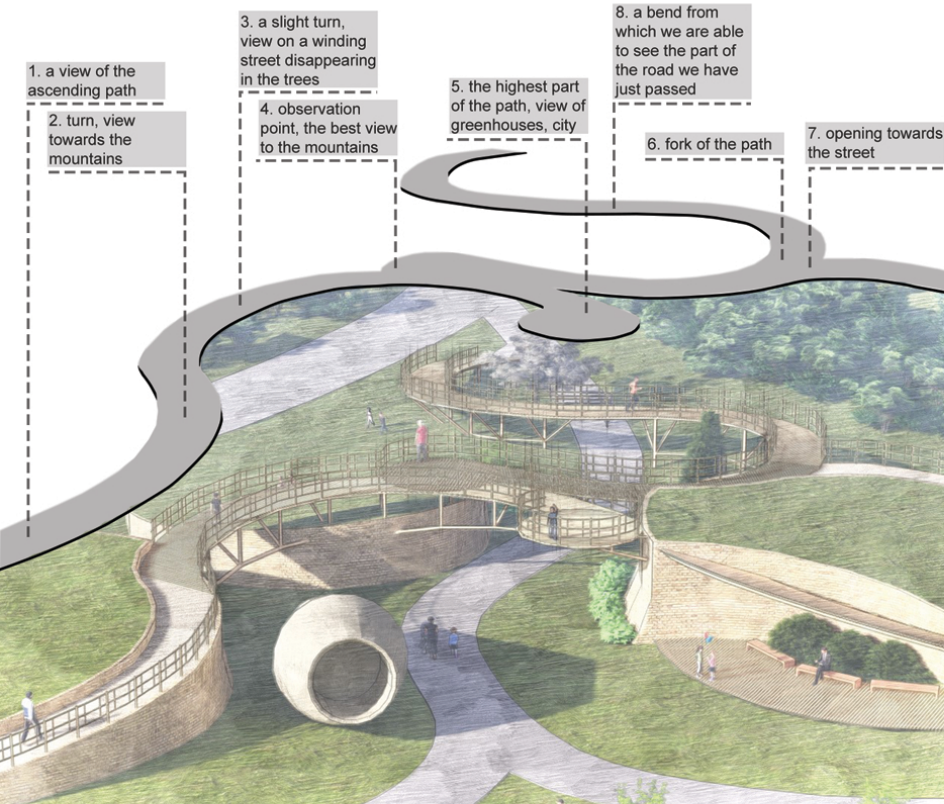


impression curve - 印象曲線

JIANDONG crossing



the smallest possible interference in landscape



- 1. a view of the ascending path
- 2. turn, view towards the mountains
- 3. a slight turn, view on a winding street disappearing in the trees
- 4. observation point, the best view to the mountains
- 5. the highest part of the path, view of greenhouses, city
- 6. fork of the path
- 7. opening towards the street
- 8. a bend from which we are able to see the part of the road we have just passed



- 1 the vase that was lying on the plot has new place
- 2 stony gravel approach
- 3 asphalt pavement (just like the one that already exists along the way)

DESIGNED TREE AND SHRUBS



Plum Blossom



Japanese Maple

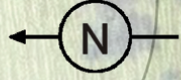


Chinese Juniper



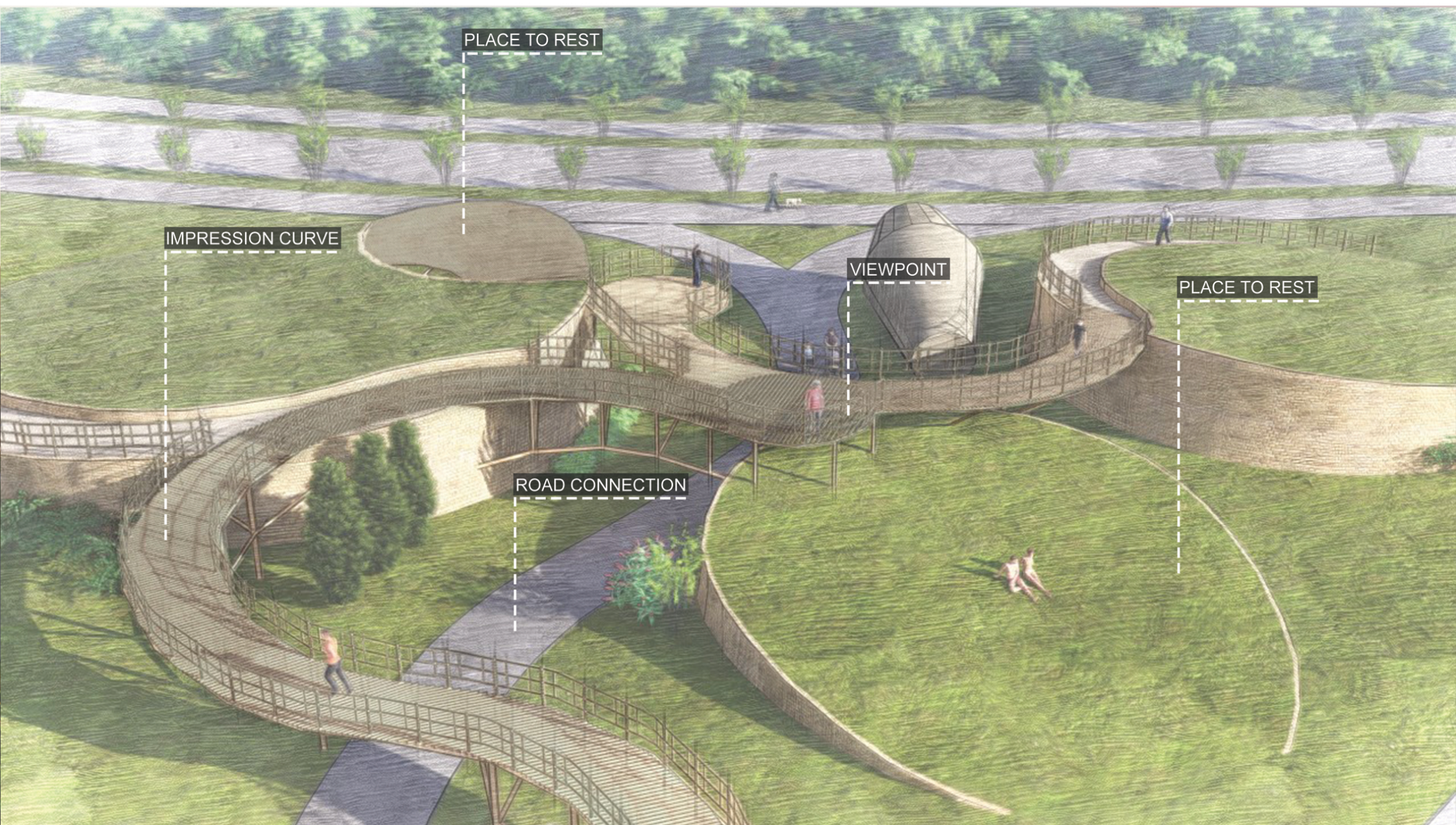
Butterfly Bush Red

SITE DEVELOPMENT PLAN
SCALE 1:500



THREE
MAIN
NATURAL
MATERIALS

Bamboo Grass Mud brick



PLACE TO REST

IMPRESSION CURVE

VIEWPOINT

PLACE TO REST

ROAD CONNECTION