

- 2002年，河南省技术监督局金质大酒店外观及室内方案中标
- 2004年，作品《郑州地中海岸桑拿会所》刊登在《室内ID+C》2004年第五期
- 2007年，郑州公路局中牟白沙服务区项目，杏花营服务区项目建筑规划设计方案中标，洛阳泉舜财富中心售楼处建筑及室内设计方案中标。南阳名门城市广场规划设计
- 2008年，多件作品刊登在《空间》当年1-4期，同年获得黄河科技大学客座教授证书。河南洛阳青要山景区规划，济源市商业步行街建筑规划设计。策划设计北京宋庄上上美术馆。
- 2009年，获得河南省建设厅颁布河南省装饰行业年度贡献奖，河南汝阳市河沿改造规划设计中标，河南省委后勤处郑州紫金山百 酒堂 酒行建筑及室内设计方案中标,3件作品收录在天津大学出版社《2009国际规划景观设计年鉴》
- 2010年，河北省鹿泉市和平广场概念设计方案征集竞赛作品入围。
- 2010年，威尼斯建筑双年展CA' ASI中国新锐建筑创作参赛方案入围。中国·鑫苑地产郑州农业路鑫苑华府售楼处建筑及室内设计方案中标。济源双龙地产150亩济源龙翔花园建筑规划设计方案中标。策划及建筑规划设计中国·石佛艺术公社。
- 2011年，漯河联合100世贸中心建筑规划设计项目，济源涌盛高档公寓项目，济源轱城工业区规划项目，



2007.洛阳泉舜财富中心



2007.洛陽泉舜財富中心

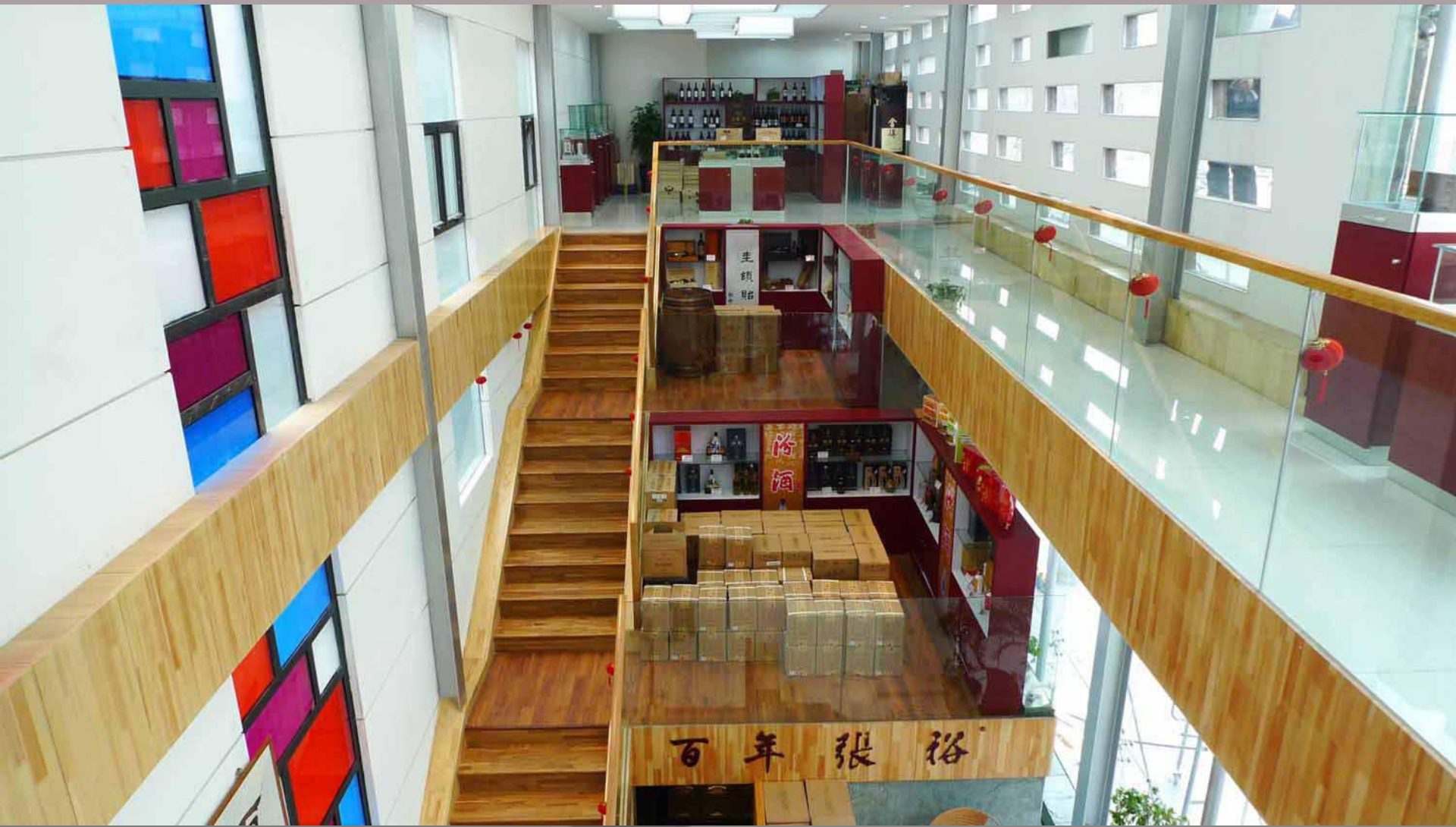


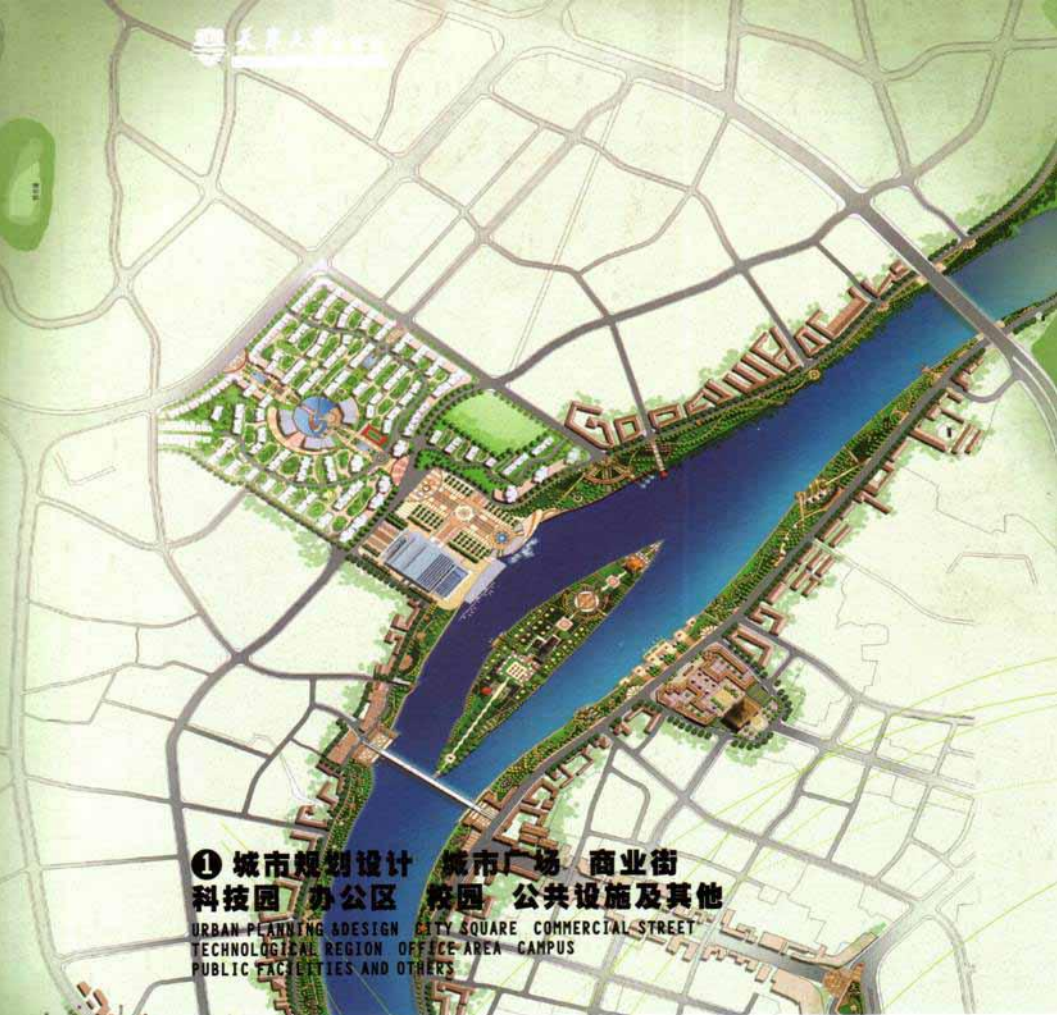
2007.洛阳泉舜财富中心



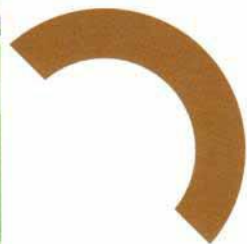
2007.洛阳泉舜财富中心







① 城市规划设计 城市广场 商业街
科技园 办公区 校园 公共设施及其他
URBAN-PLANNING & DESIGN CITY SQUARE COMMERCIAL STREET
TECHNOLOGICAL REGION OFFICE AREA CAMPUS
PUBLIC FACILITIES AND OTHERS



INTERNATIONAL
LANDSCAPE DESIGN 2010

国际景观规划设计年鉴

2010 / 张先慧
主编



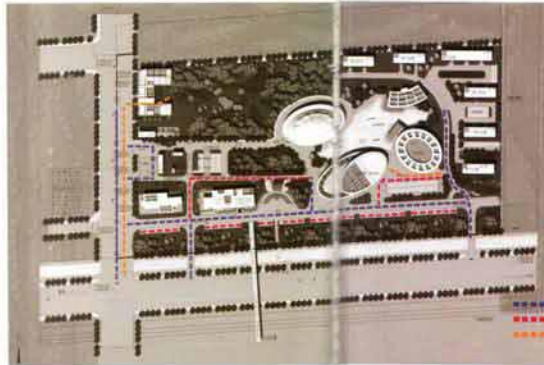
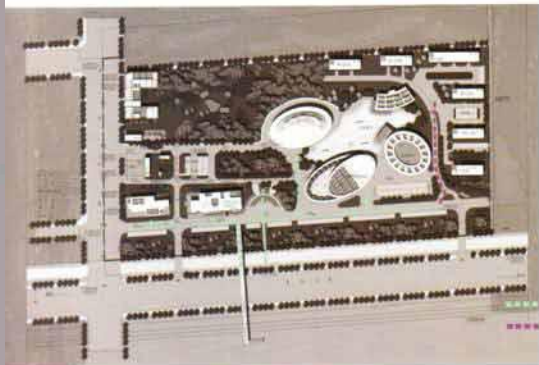
CITY SQUARE LANDSCAPE PLANNING OF NANYANG

南阳新华城市广场

项目资料
设计单位：上海景域环境设计有限公司
设计：曹竹、曹磊
建设单位：南阳新华城市广场置业有限公司
占地面积：24 145 m²
景观面积：24 145 m²

Project Information
Design Unit: Shanghai Jingye Environment Designing Co., Ltd.
Designer: Cao Zhu, Cao Lei
Client: Nanyang Xinhua City Square Co., Ltd.
Project Location: The Crossroad of Xinhua Road & Gongde Road
Land Area: 24 145 m²
Landscape Area: 24 145 m²





Project Description:

Project description

It was located in Bai Zhu town which is in the east entrance of Chengde Avenue with an excellent geographical location. We total area of 136 mu for this project and extended from southeast of the avenue, including hotel, club, swimming pool, nearly high class cuisine and so on.

Designing idea

It was not only a service zone for highway drivers, but also a comfortable, honorable, convenient and leisure space for city with a full combination of environment attribute with culture atmosphere under a principle of protecting ecological resources, as creating a featured commercial space with grace atmosphere.

Overall plan

It was a complex service zone with full range of functions including commerce, meeting, entertainment, with McDonald's and a logistics center locating in the west, center square and shops in the middle. Water landscape were arranged among all buildings together with landscape resources.

Traffic Organization:

1. People flow: commercial people flow was main, considering part we considered, as a result, we set the entrance for parallel location with Zheng Kai avenue to provide a comfortable entrance.
2. mobile flow: the convenience for mobiles influence the layout of the whole project, as a result, we planned parking lot at positions in the internal part.
3. freight line: transportation affairs were solved through the external lines.

Building volumes Designing

1. 4 stars hotel: It was composed by cuisine, accommodation, sauna and gym club with a total of 10 floors and ellipse shape vertical lobby hall with transparent structure and excellent lighting conditions provided an comfortable interior space.
2. hot spring swimming stadium: ellipse structure with film facade provided an interesting sports stadium for customers from after "light" was the theme of this space while soft light streaming through an attractive visual through the film facade.
3. Meeting center: the curtain glass facade of the building provided a grand and peaceful atmosphere. It includes meeting rooms and stages in outdoor space on the water surface, meeting rooms with different size composed the whole meeting center, conference functional demand as well as improving the overall level of the area.
4. commercial club in the internal space: the 3 floors building provided a comfortable, leisure and graceful environment.



效果图1
鸟瞰

石佛艺术公社科学大道街景三





效果图3
透视



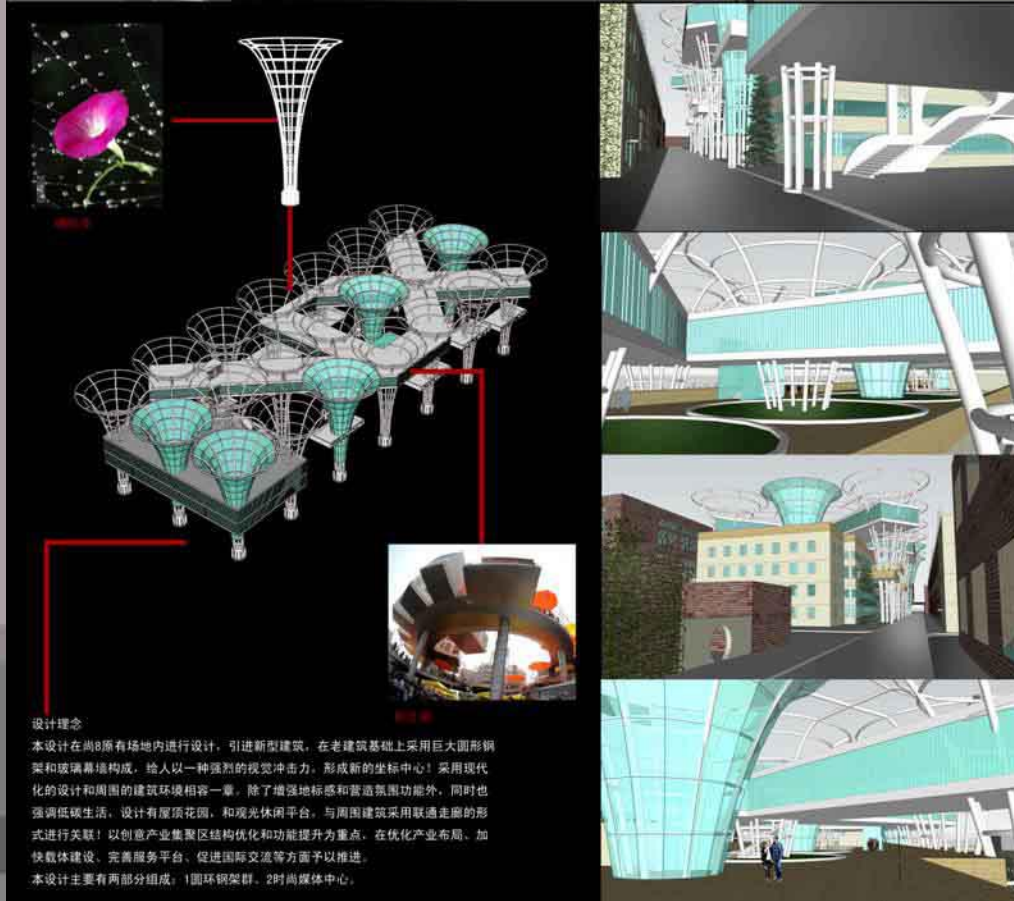
效果图4
夜景

AIM尚8设计竞赛

空中花蕾

Design Idea

The design is still to design in the original venue of SHANG 8, the introduction of new architecture, based on the use of the old building huge steel and glass curtain wall, to give people form a new coordinate center! Using modern design, to enhance the environment compatibility. In addition to enhancing the old building sphere landmark features, but also stressed that let the old building roof garden, and sightseeing platform, corridor and so on. Using the form association of Creative Industries and structural optimization and upgrading of key functions, optimizing industrial layout, speed up vector construction, the perfect platform to promote international exchange and so to promote.



设计理念

本设计在尚8原有场地内进行设计,引进新型建筑,在老建筑基础上采用巨大圆形钢架和玻璃幕墙构成,给人以一种强烈的视觉冲击力,形成新的坐标中心!采用现代化的设计和周围的建筑环境相容一章,除了增强地标感和营造氛围功能外,同时也强调低碳生活,设计有屋顶花园,和观光休闲平台,与周围建筑采用联通走廊的形式进行关联!以创意产业集聚区结构优化和功能提升为重点,在优化产业布局、加快载体建设、完善服务平台、促进国际交流等方面予以推进。

本设计主要有两部分组成:1.圆环钢架群,2.时尚媒体中心。



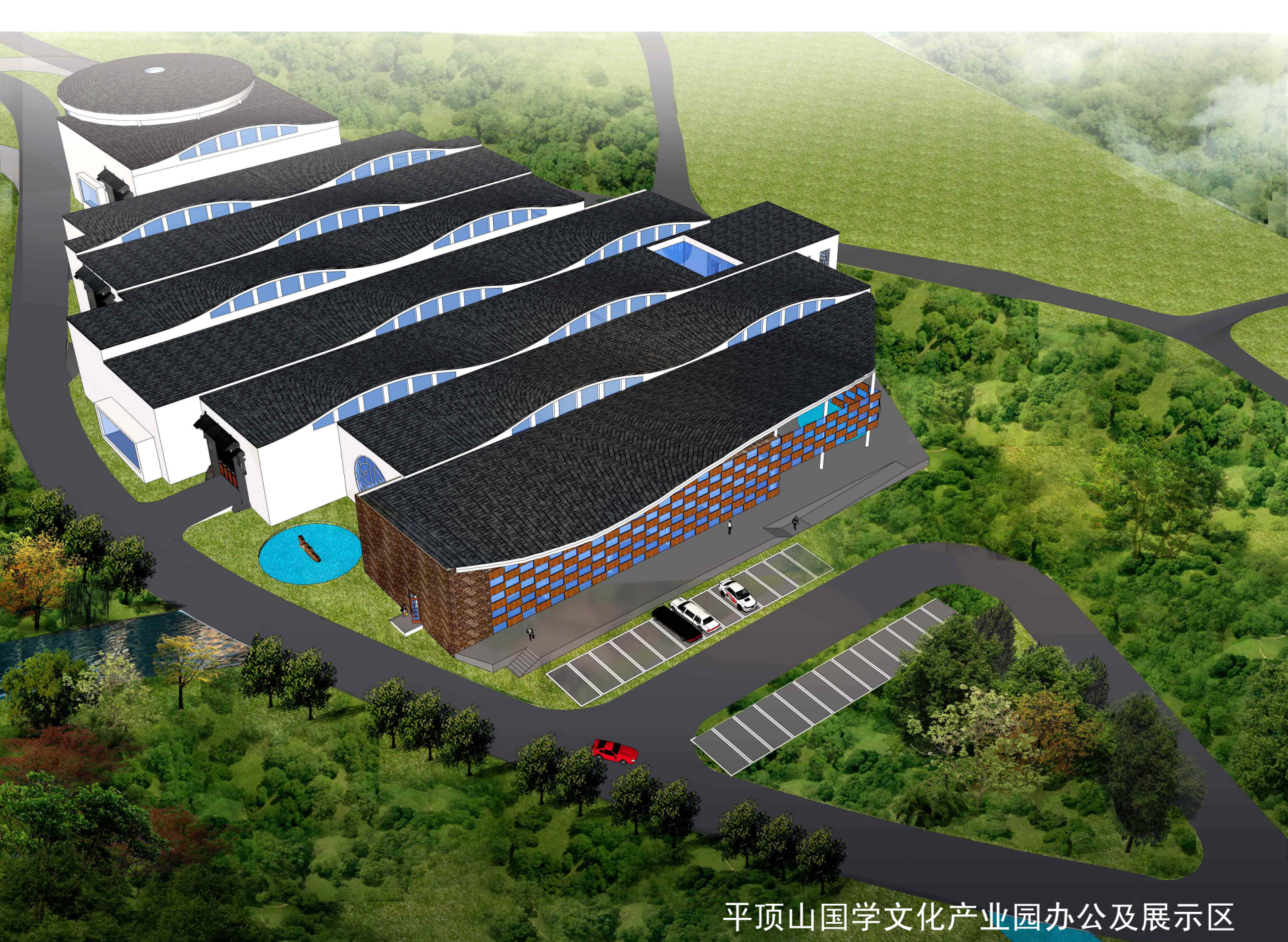




2011漯河联合100世贸中心



2008济源商业步行街



平顶山国学文化产业园办公及展示区



平顶山国学文化产业园办公及展示区



平顶山国学文化产业园办公及展示区

梅坞雅文晴
世亦色入雲
更上清花露
月
勿論論和仙
上音
字之字格古園



千頃蒹葭十裡洲
溪居宜月更宜秋
鷗兔棲水高僧舍
鶴鳩巢雲名士樓
蒼蒲葉分飛鷺羽
荻蘆花散釣魚舟
黃橙红柿紫菱角
不羨人間萬戶侯













正光北街五星级酒店及写字楼方案设计一
方案1 夜景



濮阳汇丰置业企业会所













尧山景区神牛大峡谷宾馆及会所规划













郑州航空港区1500亩中原国际生物城项目规划

郑州航空港区1500亩中原国





郑州金水东路军官公寓项目规



郑州金水东路军官公



郑州金水东路军官公



郑州金水东路军官公寓项目规划



郑州金水东路军官公寓项目







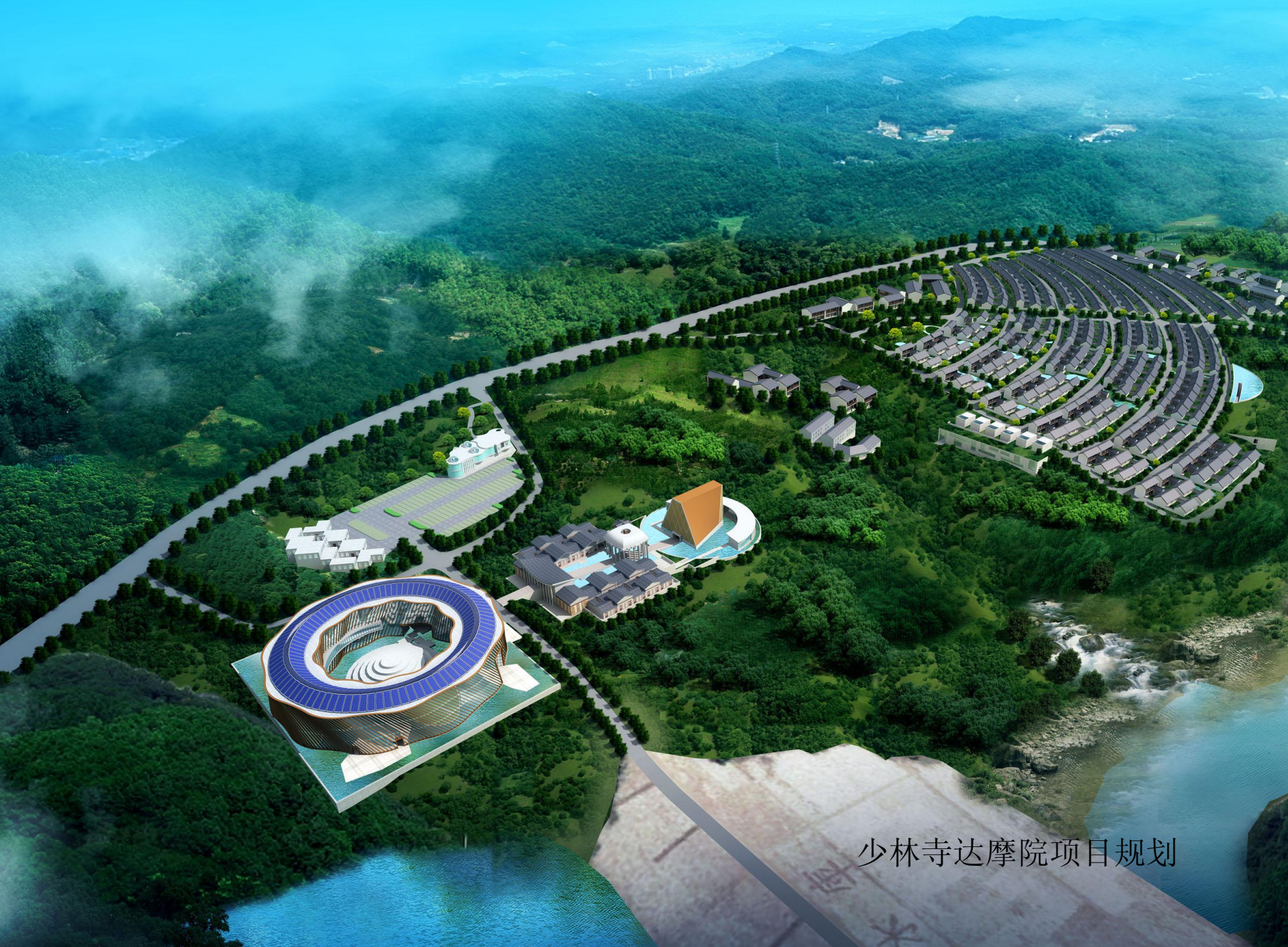
郑州航海路第八大街项目规划



海路第八大街项目规划



郑州航海路第一街项目规划



少林寺达摩院项目规划







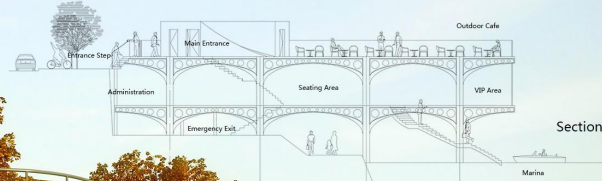


巴黎塞纳河畔香槟酒吧设计竞



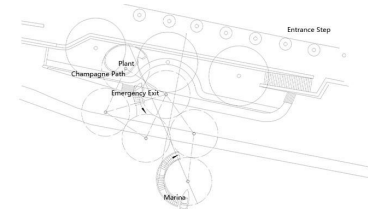
THE WHITE MUSHROOM

Paris Champagne Bar



1 Floor

102612



Flexible drinking

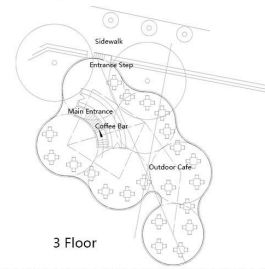
We meant to illustrate this as a space that nurtures the concept of an interesting and functional design. Here you can choose whichever drinking place suits your demands: a exotic and romantic area for VIP, a more spacious area for watching the band perform, a large area where you can enjoy music and chat, as well as open areas for enjoying sunbathing or counting stars.



2 Floor

Sustainability

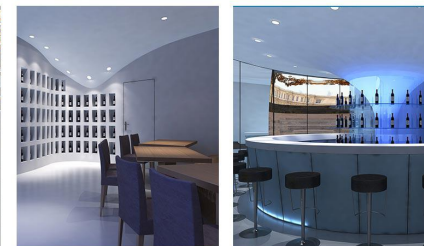
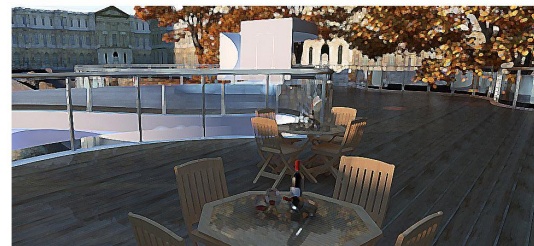
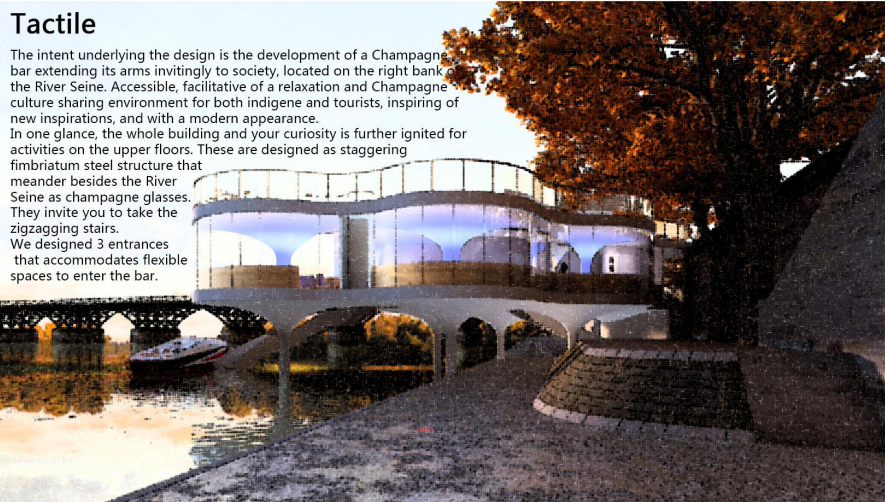
The walls in the bar are covered with glasses, distributed in a random pattern which reflects ambient light and the River Seine, pulling them deeply into the interior, filling it with the exterior. The river also reflects on the glossy surfaces of ceilings in public areas, intensifying the effect of the surrounding plants. Plenty of daylight is obtained through the numerous skylights and the large transparent facades. Diverse spaces and atmospheres can be created by altering the position of the light.

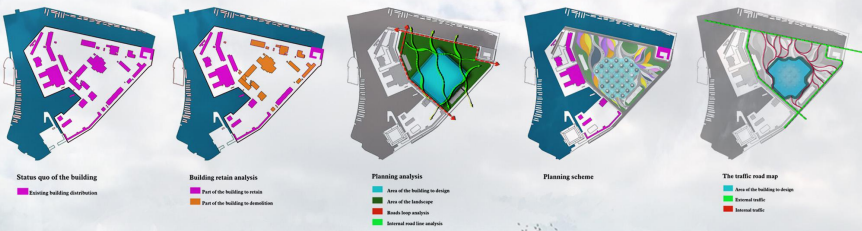
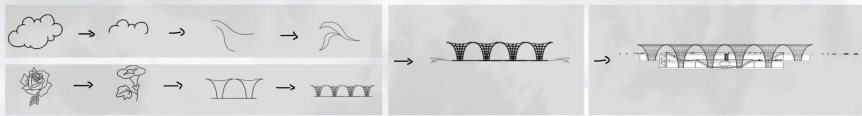


3 Floor

Tactile

The intent underlying the design is the development of a Champagne bar extending its arms invitingly to society, located on the right bank of the River Seine. Accessible, facilitative of a relaxation and Champagne culture sharing environment for both indigene and tourists, inspiring of new inspirations, and with a modern appearance. In one glance, the whole building and your curiosity is further ignited for activities on the upper floors. These are designed as staggering fimbriatum steel structure that meander besides the River Seine as champagne glasses. They invite you to take the zigzagging stairs. We designed 3 entrances that accommodates flexible spaces to enter the bar.

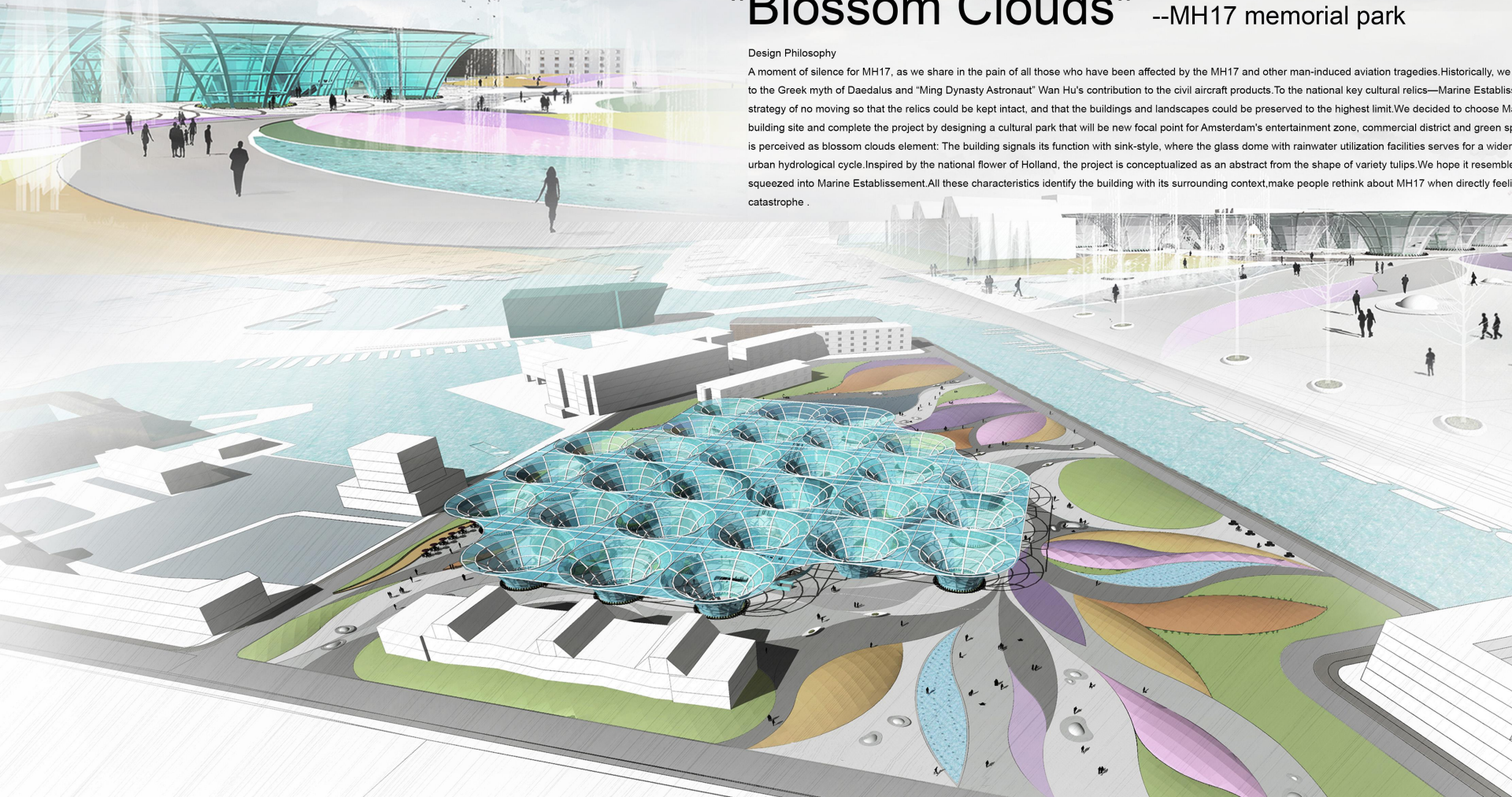


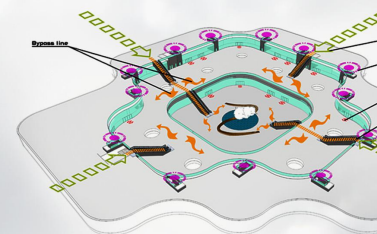
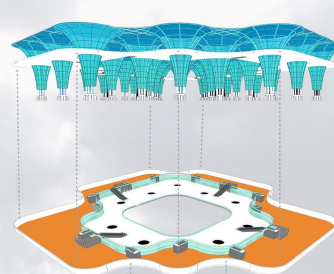
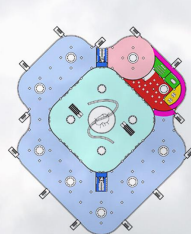
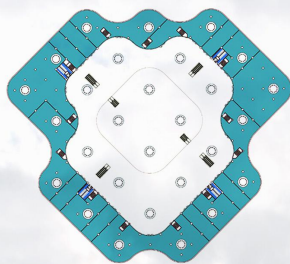
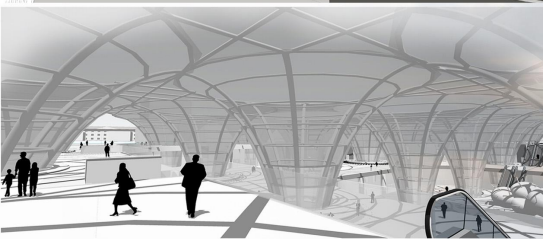


"Blossom Clouds" --MH17 memorial park

Design Philosophy

A moment of silence for MH17, as we share in the pain of all those who have been affected by the MH17 and other man-induced aviation tragedies. Historically, we refer to the Greek myth of Daedalus and "Ming Dynasty Astronaut" Wan Hu's contribution to the civil aircraft products. To the national key cultural relics—Marine Establishment, a strategy of no moving so that the relics could be kept intact, and that the buildings and landscapes could be preserved to the highest limit. We decided to choose Marine Establishment as the building site and complete the project by designing a cultural park that will be new focal point for Amsterdam's entertainment zone, commercial district and green space. The building is perceived as blossom clouds element: The building signals its function with sink-style, where the glass dome with rainwater utilization facilities serves for a wider urban hydrological cycle. Inspired by the national flower of Holland, the project is conceptualized as an abstract from the shape of variety tulips. We hope it resembles a tulip squeezed into Marine Establishment. All these characteristics identify the building with its surrounding context, make people rethink about MH17 when directly feeling the catastrophe.

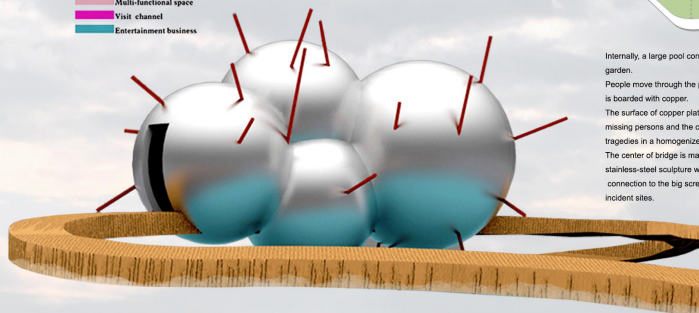




The first floor underground

The second floor underground

- MH-17 memorial
- Human spacecraft man-mad destruction history museum
- Administrative office
- Meeting room
- Toilet
- Cafe
- Multi-functional space
- Visit channel
- Entertainment business



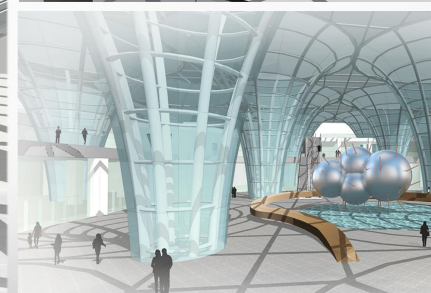
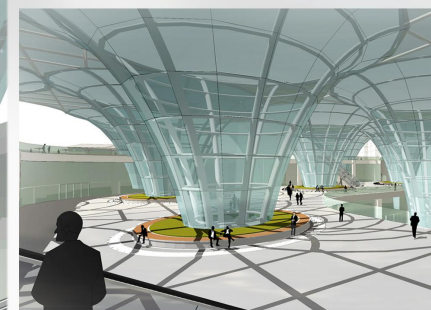
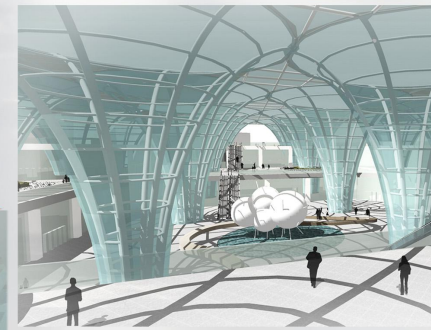
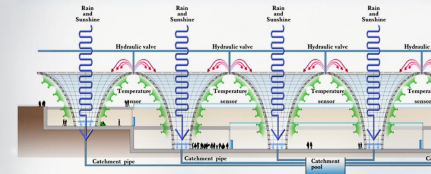
Internally, a large pool contributes to enhance the spatial quality of the garden.

People move through the park via covered bridges spanning over water. It is boarded with copper.

The surface of copper plate are carved by the names of victims, missing persons and the cause of the every man-induced aviation tragedies in a homogenized way.

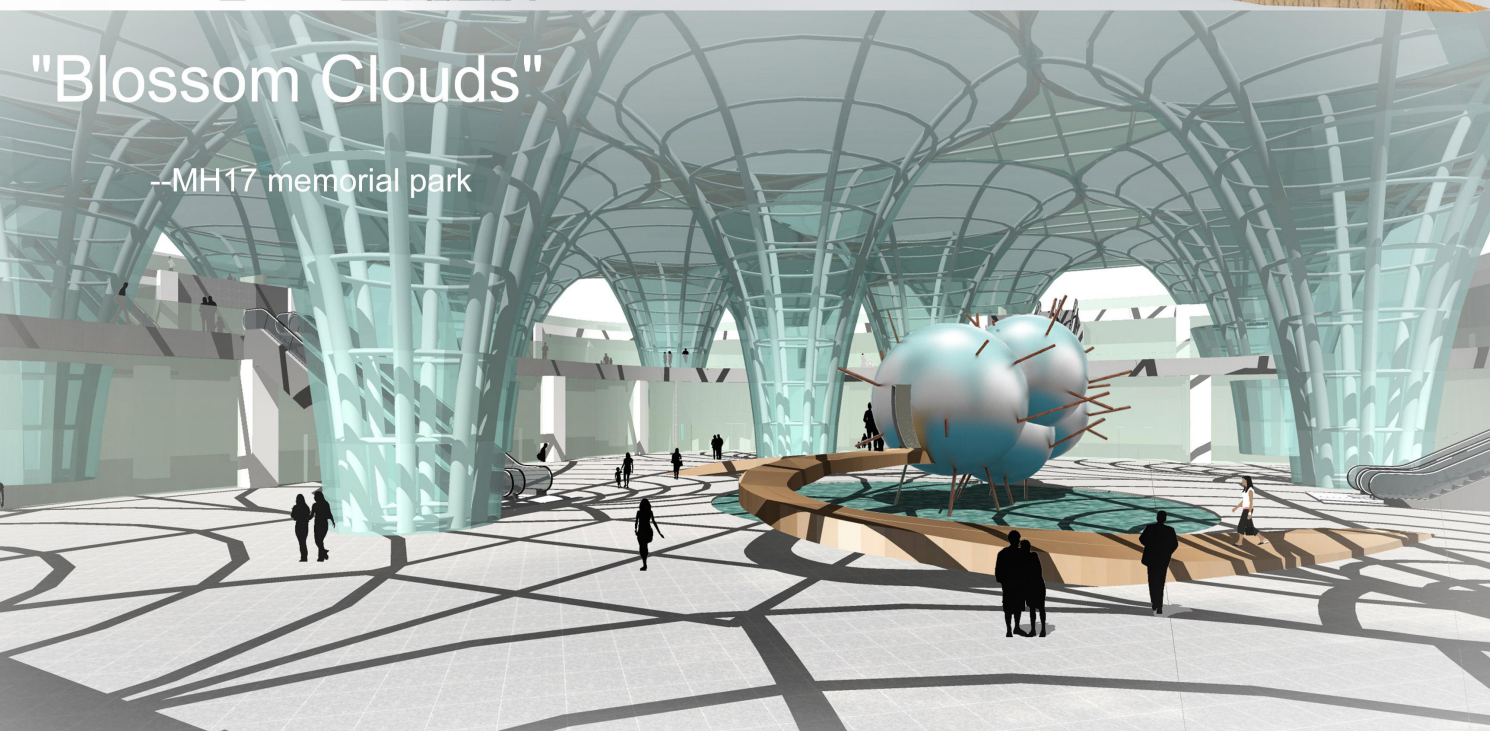
The center of bridge is made completely by the principles of a exploded stainless-steel sculpture with a central void, connection to the big screen which displays the footage came from incident sites.

Energy conservation and emissions reduction instructions



"Blossom Clouds"

—MH17 memorial park









总体鸟瞰图



内街透视图







政七街红旗路项目



政七街红旗路项目

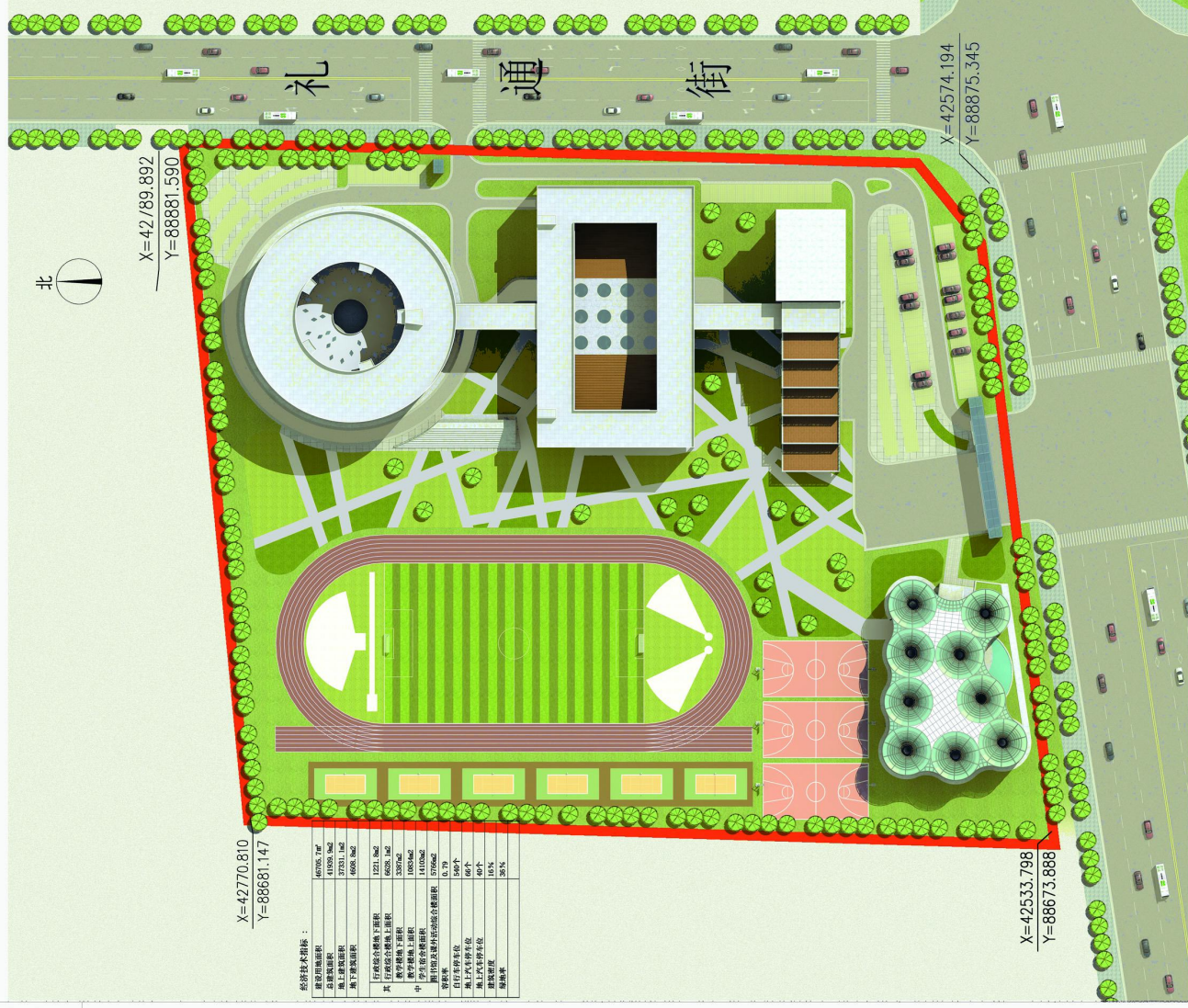


政七街红旗路项目



鸟瞰图

彩色平面图





透视图



透视图



透视图