

## 寻找和谐共生的家之风景——暖阳

Looking for a harmonious and symbiotic view of home——Warm Sun

---

一室一厅小户型的温馨

One room,one bedroom,cosy



➤ 设计理念：

和谐

家，一个舒展身心的空间，一个人与物和谐共存的空间，在满足功能的前提下，形、色、光、质相辅相成的组合，方与圆，大与小，粗与细互相矛盾又各自相得益彰，形成一个统一的整体。

本案设计的为一室的小户型住宅，麻雀虽小五脏俱全，造型与结构搭配，色彩与光线搭配，质感与肌理搭配，打造一个平和宁静的空间。

Design concept:

Harmonious

Home, a relaxing environment, harmonious coexistence of individual and object space, under the premise of meeting the functional, shape, color, light quality, complementary combination of square and round, big and small, coarse and fine contradictory each other, to form a unified whole.

The design of this case is a small apartment of a room. The sparrow may be small but it has all the vital organs., the shape and the structure match, the color and the light match, the sense of reality and the texture match, creates a peaceful and tranquil space.

➤ 空间概况：

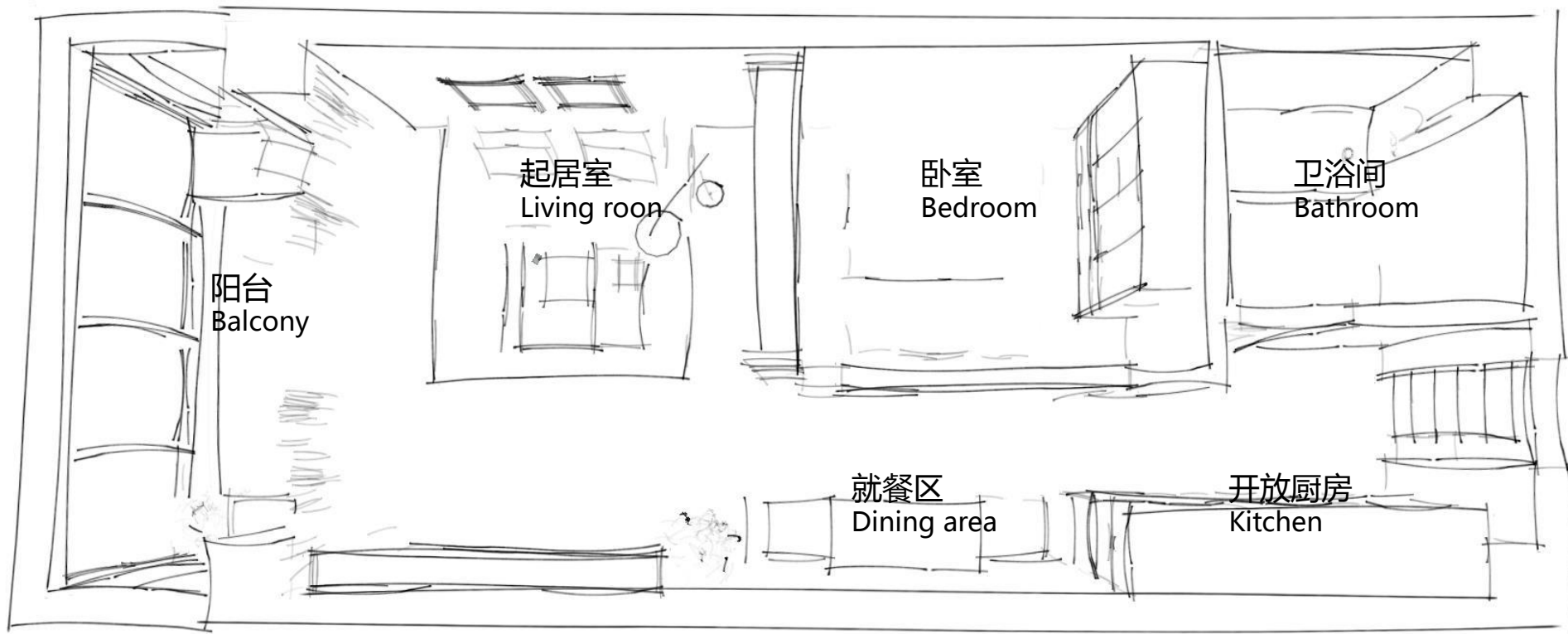
人群定位为年轻人，1-2人居住的空间，色彩以清新淡雅为主。

整个空间面积约为52m<sup>2</sup>，起居室约为17.2m<sup>2</sup>，卧室约为9.6m<sup>2</sup>，卫生间约为6m<sup>2</sup>，阳台约为7.9m<sup>2</sup>，就餐区和厨房面积约为15.3m<sup>2</sup>厨房为开放式，设在进门处，就餐区为两人桌，置于墙边，尽可能扩大活动范围。

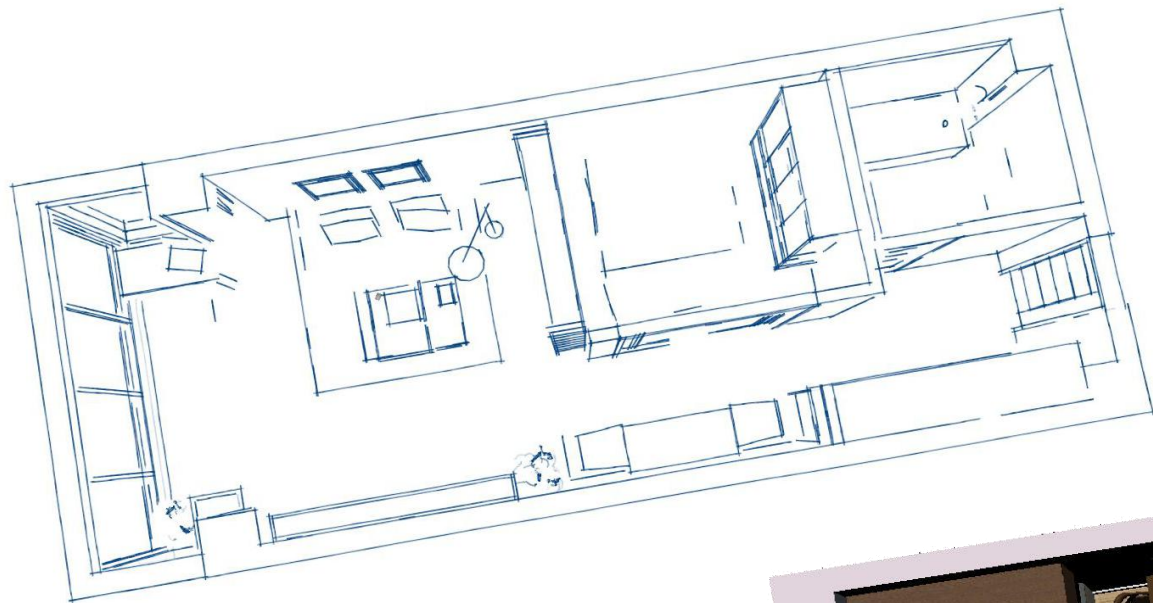
Space overview:

Crowd positioning for young people, 1-2 people live in space, the color of fresh and elegant.

The entire space area of 52 square meters, the living room is about 17.2 square meters, 9.6 square meters bedroom, the bathroom is about 6 square meters, 7.9 square meters balcony, dining area and kitchen area of about 15.3 square meters of open kitchen, dining area is located in the entrance, a table for two, on the wall, as far as possible to expand the range of motion.



墙面为饱和度较低的彩色乳胶漆，大范围为高雅冷回色，就餐区和厨房区域的墙面以灰粉色点缀整个空间，地面大面积铺橡木地板。  
The walls are low saturation color latex paint, large range of elegant, cold back color, dining area and kitchen area of the wall with gray pink embellishment of the entire space, large oak flooring flooring.





起居室

Living room

起居室的沙发采用双人沙发Natuzzi——VOLO系列，色彩选择素净的白色，尺寸为176cm\*110cm；地毯为Natuzzi——RIGORIGA系列，图案为彩色条纹，尺寸为170cm\*240cm；落地灯为Natuzzi——JUMP系列，可调节悬臂式落地灯，灯架表面为碳纤维涂层，黑色哑光饰面；；电视剧柜为Natuzzi——NOVECENTO系列，采用桦木，可自助组合。

The living room sofa with Natuzzi - VOLO series, plain white color, the size of 176cm\*110cm; Natuzzi - RIGORIGA series carpet, pattern of colored stripes, the size of 170cm\*240cm; Natuzzi - JUMP lamp series, adjustable cantilever type lamp, lamp holder for carbon fiber surface coating, black matte finish;; TV cabinet is Natuzzi NOVECENTO series, the birch, can be self combination.



卧室  
Bed room

卧室空间利用屏风式书架与起居室隔开，双人床为Natuzzi——DIAMANTE系列，尺寸为240cm\*194cm，书架为Natuzzi——PLISSÉ系列，模块化面板以置物架支撑，结实耐用，灵活多变。

The bedroom space use screen type bookshelf and living room separated by double Natuzzi - DIAMANTE series, the size of 240cm\*194cm, Natuzzi, PLISS e shelf series, modular panel with shelf support, durable, flexible.



就餐区

Dining area

餐厅与厨房相邻，餐桌采用Natuzzi——CONVIVIO系列，钢化玻璃桌面，尺寸为100cm\*160cm，若就餐人数增多，桌子两侧可延长。餐椅采用Natuzzi——BRERA系列，实木框架，不易变形，尺寸为55cm\*51cm

The dining room is adjacent to the kitchen. The dining table is made of Natuzzi - CONVIVIO series, toughened glass table top. The size is 100cm\*160cm. If the number of diners increases, both sides of the table can be extended. Chair by Natuzzi BRERA series, solid wood frame, not easy to deformation, the size is 55cm\*51cm

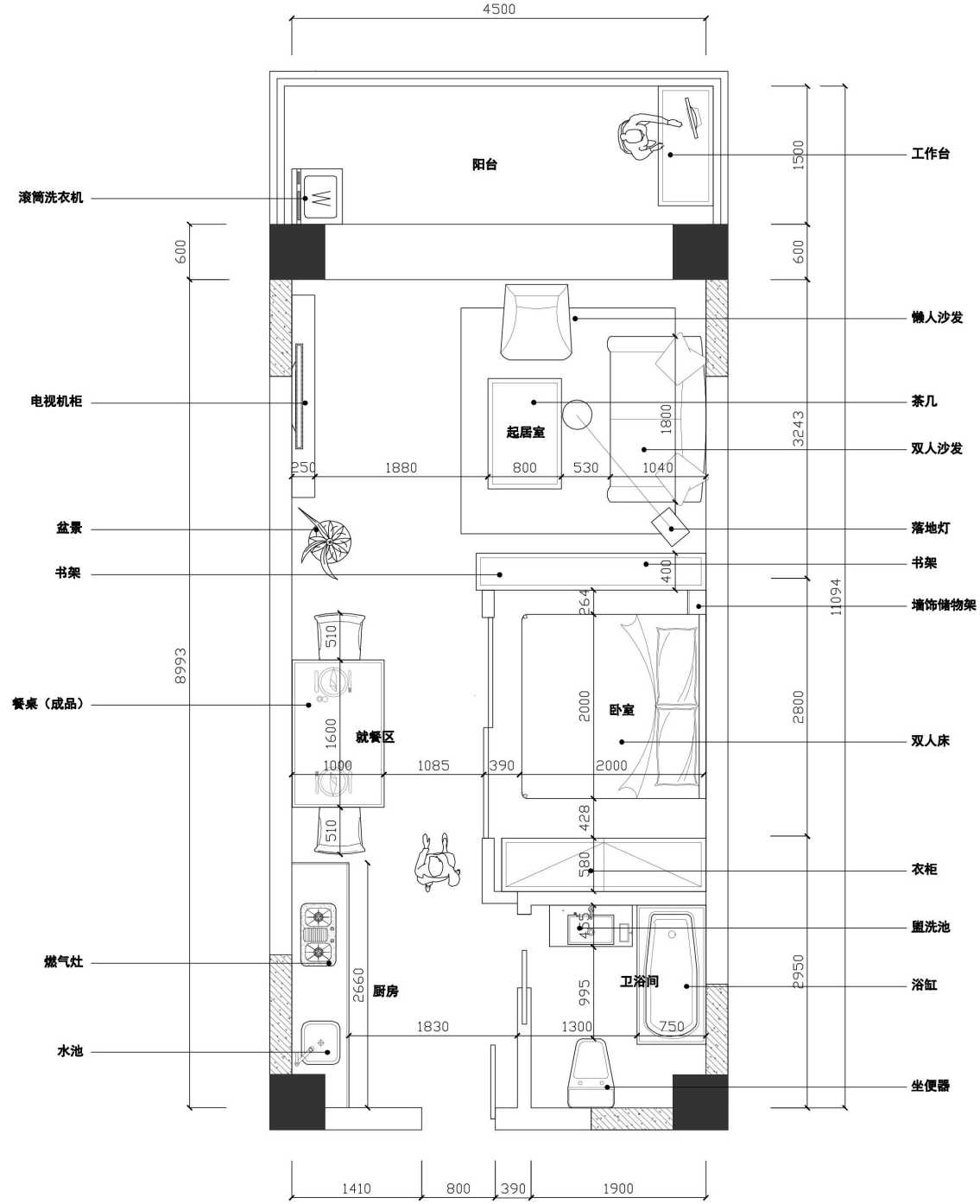




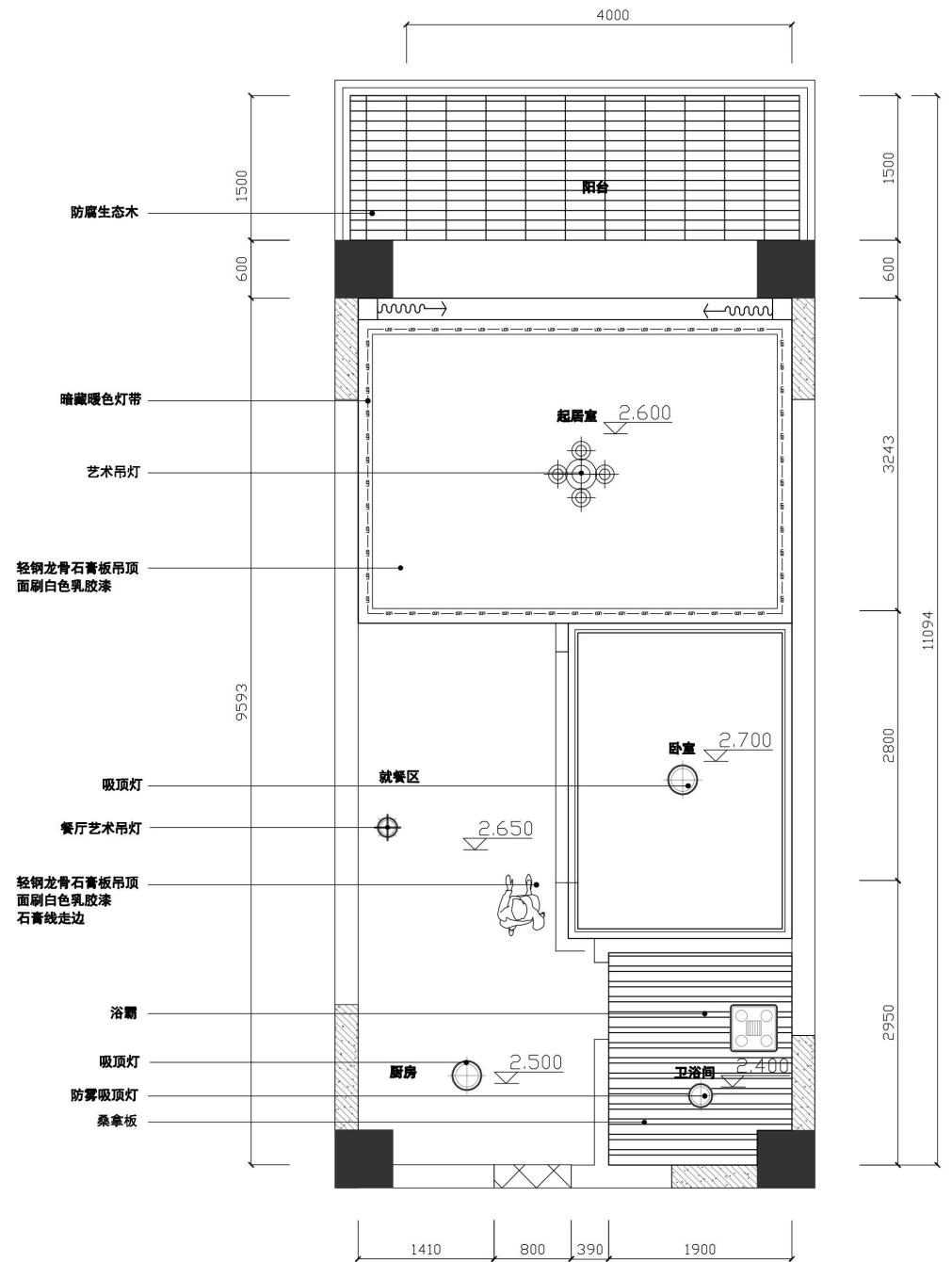
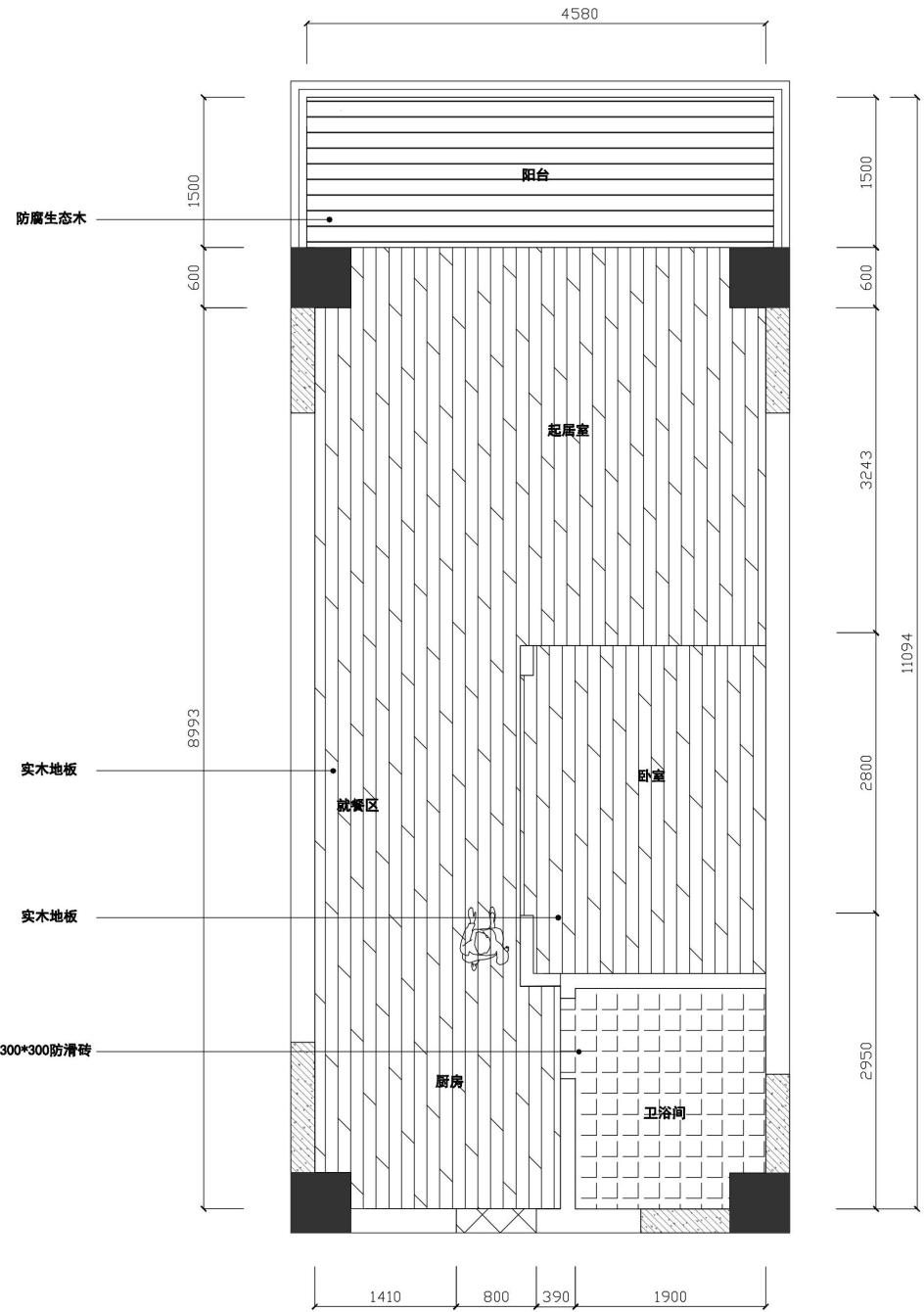
卫浴间  
Bathroom

空间呈狭长形，入户处两侧分别为开放式厨房和卫浴间，考虑卫浴间空间面积和布局，采用推拉门，尽可能少占用面积，卫浴间采用 Natuzzi 风格中心的作品——山羊皮包边的NUMA反光镜，尺寸为100cm\*100cm

The space is elongated, on both sides were open kitchen and bathroom, bathroom space and consider the layout of the sliding door, as little as possible in the occupied area, Natuzzi style center works NUMA mirror goat leather edges using the bathroom, the size is 100cm\*100cm

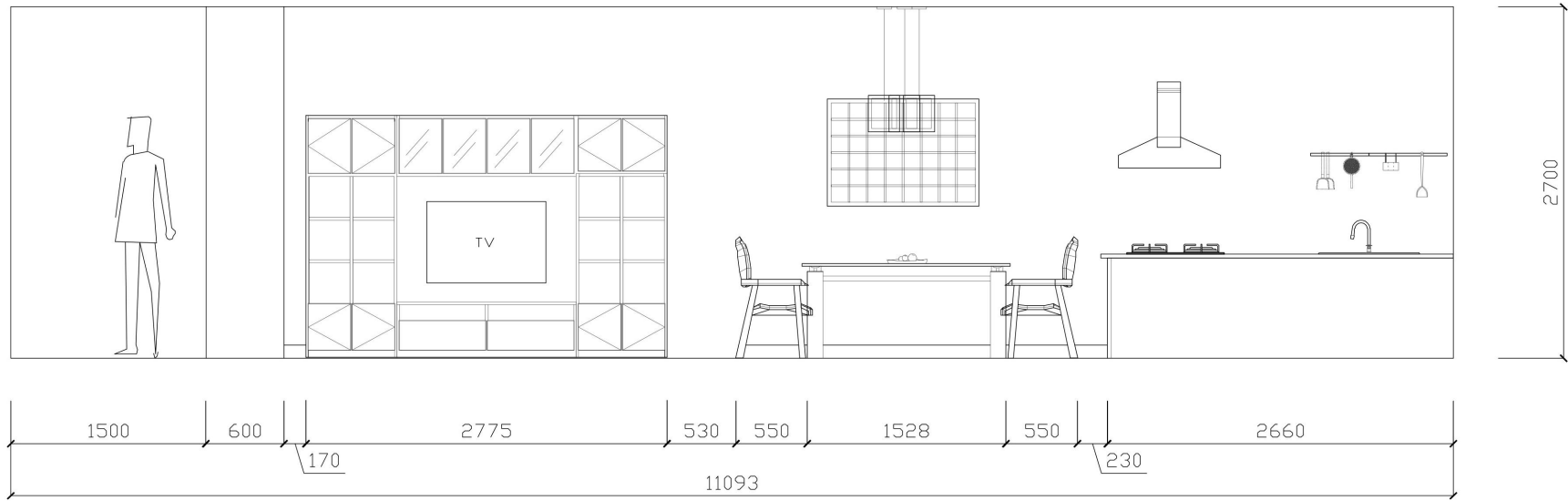


平面布置



天花布置

地面铺装



立面简图示意图



起居室  
Living room

效果图



卧室  
Bedroom

效果图



阳台  
Balcony

- 阳台与起居室之间没有门，利用窗帘作为软隔断，一来避免过多占用空间，二来增加空间的通透性；在阳台放置书桌，单独设置一片工作区，在这里办公学习可更多利用自然光，节省资源；同时利用竹帘遮光，植物采用吊蓝，增加趣味性，书架放在垭口处，浅白色干净纯洁。

There is no door between the balcony and the living room, the curtains as a soft partition, to avoid too much space, and increase the permeability of space; the desk placed in the balcony, a separate set of work area, learning can be more use of natural light, saving resources in the office here; at the same time by bamboo shading plants by hanging blue, more interesting, the bookshelf in Yakou, clean and pure white light.

- 卧室采用羽毛吊灯，柔软轻盈，柔和较硬线条，墙面用绿植装扮，赋予空间生机与活力；由于面积有限，双人床便占去很大一片空间，床头采用两个置物架充当床头柜的作用，即可点缀又具有使用价值。

The bedroom with feather chandelier, oft and hard line, the wall with green dress, give vitality; due to the limited area, double bed will account for a large piece of space, the bed adopts two racks as a bedside cabinet, and has the value to embellishment.

- 起居室是使用率最高的空间，暖暖的橘黄色懒人沙发点缀教淡雅朴素的空间，增加房屋温馨感，沙发背景墙彩色圆盘装饰使得墙面更具灵动性，凸显主人的生活情趣。

The living room is the highest utilization rate of the space, the warm orange Beanbag with elegant simplicity of teaching space, increase the housing comfortable sofa backdrop decoration color disc makes the wall more dynamic, highlighting the master of life



谢谢观赏  
THANKS

---

